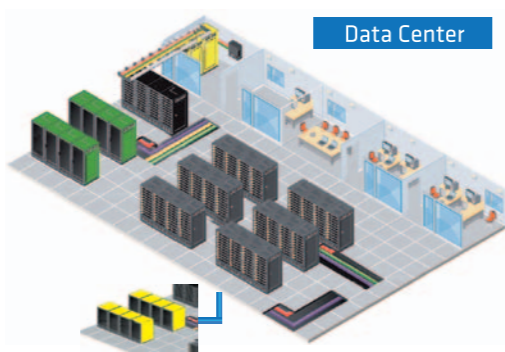


4th Level™ product concept

The "4" of 4th Level comes from "Tier 4", which shows the highest grade of reliability for Data Center facility.

Sumitomo Electric offers 4th Level products for efficient cabling and removal of cable congestion so that we can contribute Data Center improvements of the entire reliability, the power consumption and the total cost.



Data Center

4th Level™ Network Solutions

Cabling Solution for Data Center



SUMITOMO ELECTRIC INDUSTRIES, LTD.

Tokyo(Japan)
Sumitomo Electric Industries,Ltd.
(Global Network System Division)
 1-3-13,Motoakasaka,Minato-ku,
 Tokyo 107-8468,Japan
 TEL: (81)3-6406-4012
<http://global-sei.com/fttx/>

London(U.K.)
Sumitomo Electric Europe Ltd.
 Unit 220, Centennial Park, Elstree,
 Hertfordshire, WD6 3SL, U.K.
 TEL:(44) 208-953-8118
<http://www.sumielectric.com/>

Dubai(U.A.E.)
Middle East Office
 Dubai Airport Free Zone Phase 6 EA,
 Office 303
 P.O. Box 54890, Dubai, UAE
 TEL: (971) 4-701-7338

New Delhi(India)
SEI Trading India Pvt. Ltd.
 501, Vatika City Point, M.G. Road, Gurgaon,
 122002,Haryana, India
 TEL: (91) 124-4577470

Bangkok(Thailand)
Sumitomo Electric(Thailand)Ltd.
 B.B.Bldg. 15F, 54 Sukhumvit 21 Road, Soi Asoke,
 North Klongtoey, Wattana, Bangkok 10110, Thailand
 TEL: (66) 2-260-7231~5
<http://www.set-th.com/>

Singapore
Sumitomo Electric Interconnect Products
(Singapore)Pte.Ltd.
 Creative Resource 31 International Business Park #02-10,
 Singapore 609921
 TEL: (65) 6261-3388
<http://seps.com.sg/>

Hong Kong
Sumitomo Electric Asia, Ltd.
 Room 2624 - 2637, Sun Hung Kai Centre,
 30 Harbour Road, Wanchai, Hong Kong
 TEL: (852) 2576-0080
<http://www.seac-cn.com/>

Sao Paulo (Brazil)
SEI Brasil Solucoes Opticas
 Avenida Victor Andrews, 1209
 Sorocaba/SP - CEP:18086-390, Brazil
 TEL: (55) 15-3416-7100
<http://www.seibrazil.com.br>

EH-375(2015.02)
(NS)

SUMITOMO
ELECTRIC
GROUP

SUMITOMO
ELECTRIC

4th Level™ Network Solutions

Reliable and easy-to-use Data Center cabling solution



Features and advantages

MPO connector solution →P16

- Multi-fiber MPO connector for trunk cable connection
- Much compact cable end than LC or SC termination
- ✓Make installation work of Plug & Play cable smooth
- ✓Realize high density and quick termination at rack



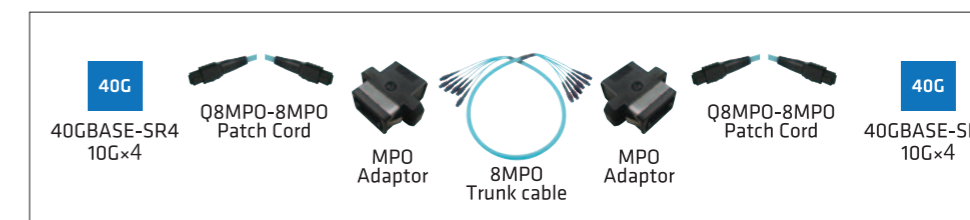
MPO connectorized cable



MPO cassette

8-core cabling solution, 4th Level™-8Core

- ✓40G upgrade from 10G keeping same trunk cable
- ✓Low insertion loss 40G configuration without cassette



40G 8-core cabling solution

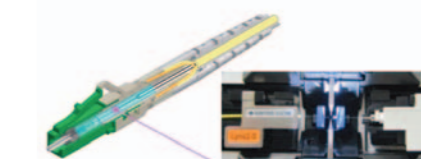


Q8MPO connector for QSFP+

Field installable connector solution →P22

Lynx2 CustomFit™ splice-on connector

- Can decide cable length exactly at site by field termination
- ✓Remove cable congestion in and around rack
- ✓Make easy install, move, add and change of connection



Lynx2-LC

Just use standard bulk cable and connector kit

- ✓Short product lead time by no custom-made cables



Conventional cabling solution

Field installable connector solution



Lynx2-MPO

CONTENTS

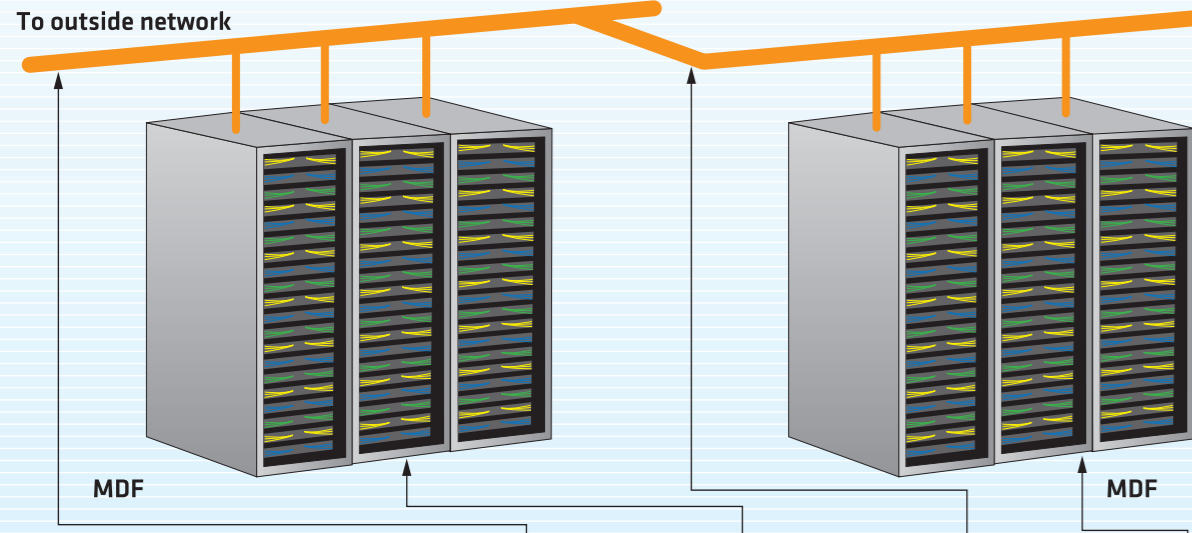
4th Level cabling solution for Data Center	P3	Connector cleaner / Direct Attach Copper cable	P20
Optical cable for trunk line	P6	MPO connector polarity and connectivity	P21
19-inch cabling rack solution	P7	Field installable connector solution	P22
19-inch rack-mounted optical panel	P9	Fusion splicer and the accessories	P26
High strength / Low friction optical cable	P13	Data Center infrastructure management system	P30
LED identifiable optical connector	P15	Fiber line-up / Ethernet standards	P31
MPO connector solution	P16	Single-fiber / Multi-fiber optical connector	P32

4th Level™ cabling solution for Data Center

As a pioneer of optical cable, Sumitomo Electric offers Data Center cabling solution with high quality and easy-to-use products.

Main Distribution Area (MDA)

MDA Cable aggregation area to terminate outside plant cables of telecom operators and to distribute the lines to each floor, each user, cloud service areas etc by trunk cables.

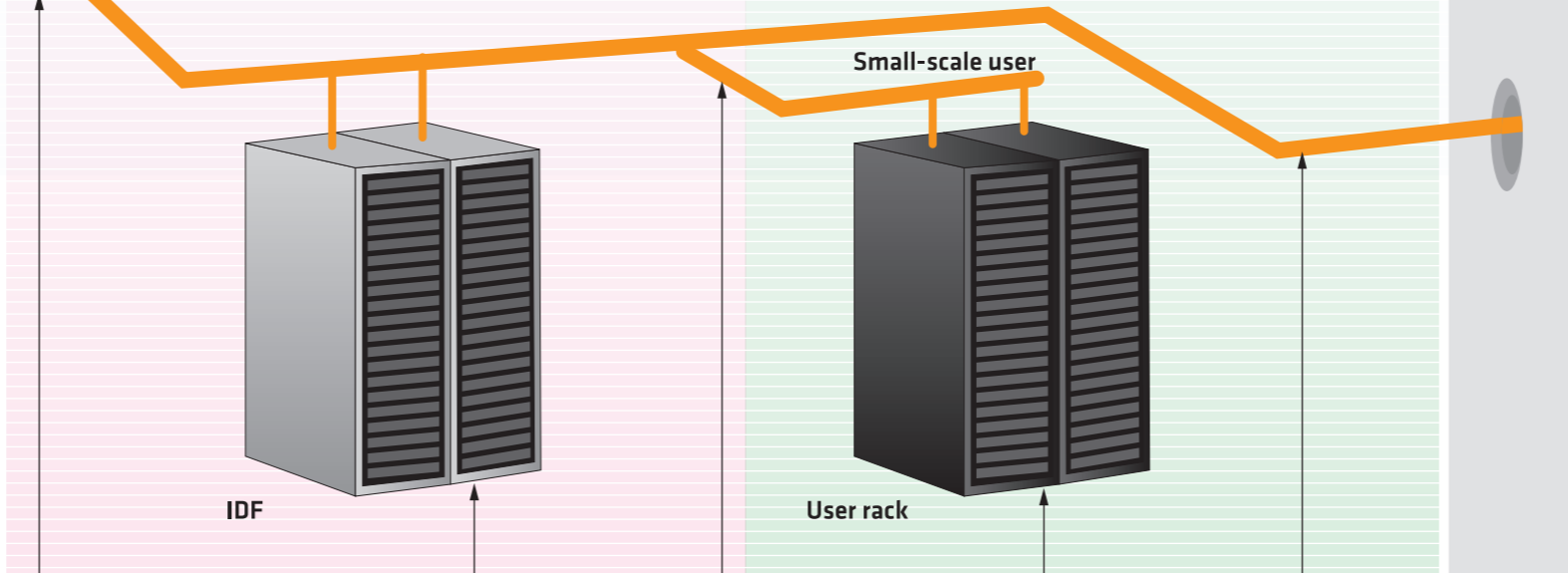


Cabling solution

<p>MPO connector solution</p> <p>Realize high density cabling by MPO connector</p>	<p>Plug & Play</p> <p>Simplify and shorten cable connection work by MPO cable</p> <p>MPO splice-on connector</p> <p>Install MPO at field to remove cable congestion</p>	<p>19-inch panel →P9</p> <p>MPO cassette →P11</p> <p>MPO cable →P16</p> <p>High strength cord →P13</p> <p>Break-out cable for MPO →P18</p> <p>Lynx2-MPO →P22</p>	<p>MPO cassette →P11</p> <p>High strength cord →P13</p>
<p>Ribbon splice solution</p> <p>Splice fan-out assembly to ribbon cable for efficient connection work</p>	<p>Ribbon slot cable →P6</p>	<p>19-inch panel →P9</p> <p>High strength cord →P13</p>	<p>19-inch panel →P9</p> <p>High strength cord →P13</p>
<p>Single fiber connector solution</p> <p>Single fiber connection by connectorized cable or field installable connector</p>	<p>Plug & Play</p> <p>Simplify cable connection work by connectorized cable</p> <p>Single fiber splice-on connector</p> <p>Install SC/LC at field to remove cable congestion</p>	<p>19-inch panel →P9</p> <p>High strength cord →P13</p> <p>Connectorized cable →P14</p> <p>Break-out cable (cord) →P14</p> <p>Lynx2-LC / Lynx2-SC →P22</p>	<p>19-inch panel →P9</p> <p>High strength cord →P13</p>

Zone Distribution Area (ZDA)

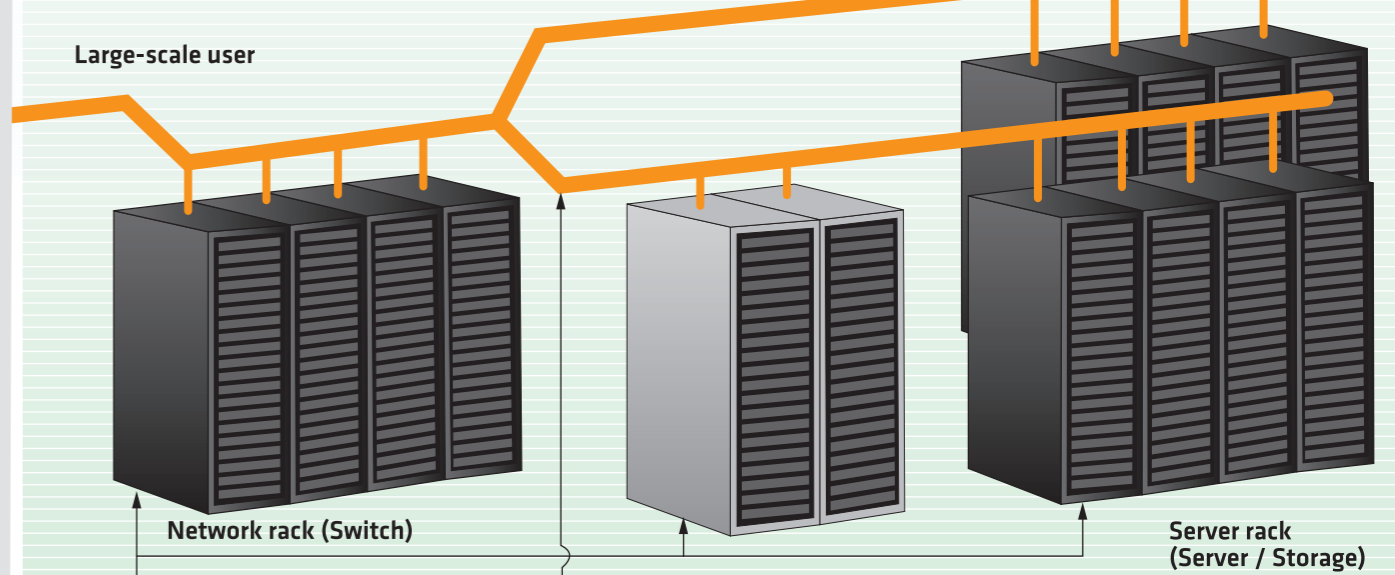
ZDA In ZDA, cables from MDA are connected and distributed to user racks etc in each floor.



<p>MPO cable →P16</p> <p>Break-out cable for MPO →P18</p> <p>Lynx2-MPO →P22</p>	<p>MPO cassette →P11</p> <p>High strength cord →P13</p> <p>LED identifiable connector →P15</p>	<p>19-inch panel →P9</p> <p>High strength cord →P13</p> <p>LED identifiable connector →P15</p>	<p>Ribbon slot cable →P14</p> <p>High strength cord →P13</p>
<p>Ribbon slot cable →P6</p>	<p>19-inch panel →P9</p> <p>High strength cord →P13</p> <p>LED identifiable connector →P15</p>	<p>19-inch panel →P9</p> <p>High strength cord →P13</p>	<p>High strength cord →P13</p>
<p>Connectorized cable →P14</p> <p>Break-out cable (cord) →P14</p> <p>Lynx2-LC / Lynx2-SC →P22</p>	<p>19-inch panel →P9</p> <p>High strength cord →P13</p> <p>LED identifiable connector →P15</p>	<p>19-inch panel →P9</p> <p>High strength cord →P13</p>	<p>Connectorized cable →P14</p> <p>Break-out cable (cord) →P14</p> <p>Lynx2-LC / Lynx2-SC →P22</p>

User Area / Equipment Distribution Area (EDA)

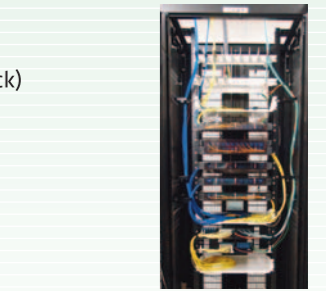
EDA User network area having equipment such as switch, server and storage.



<p>MPO cassette →P11</p> <p>High strength cord →P13</p> <p>LED identifiable connector →P15</p>	<p>MPO cable →P16</p> <p>Break-out cable for MPO →P18</p> <p>Lynx2-MPO →P22</p>	<p>19-inch panel →P9</p> <p>High strength cord →P13</p> <p>LED identifiable connector →P15</p>	<p>Ribbon slot cable →P6</p>
<p>19-inch panel →P9</p> <p>High strength cord →P13</p> <p>LED identifiable connector →P15</p>	<p>Connectorized cable →P14</p> <p>Break-out cable (cord) →P14</p> <p>Lynx2-LC / Lynx2-SC →P22</p>	<p>19-inch panel →P9</p> <p>High strength cord →P13</p>	<p>Connectorized cable →P14</p> <p>Break-out cable (cord) →P14</p> <p>Lynx2-LC / Lynx2-SC →P22</p>

Universal products

- Cabling rack (MDF, IDF, Network rack) →P8
- Rack accessories →P12
- Connector cleaner →P20



- Fusion splicer T-81C / T-71M →P26~P29



DCIM product

Management tool for Data Center infrastructure and temperature sensor

Total management system [iDC Visual Manager]



Fiber optic temperature distribution sensor [OP Thermo FTR3000]



→P30

Optical cable for trunk line

Slotted core ribbon cable

Ribbon cable suitable to outside cable termination in MDA and multi-fiber connection between MDF and IDF or inter-connection in EDA.

- Small diameter and light weight by slotted design for fiber ribbon.
- Efficient ribbon splice available.
- Water blocking available by dry water swellable tape.
- Other fiber count available upon request.

Optional PE sheath, Water blocking, Flame retardant, Metal free

4-fiber ribbon type (SZ)

Fiber count	24	60	100	200	300
Fiber diameter [mm]	0.25				
Cable diameter [mm] *	8.5	9.5	11.5	15.5	20.5
Cable weight [kg/km] *	65	75	110	180	320
Strength member [mm]	1.4	1.6	2.0	2.3	2.6
Maximum load [N]	900	1180	1850	2440	3120
Bending radius [mm]	After installation		During installation		
	85	95	115	155	205
	170	190	230	310	410

8-fiber ribbon type (SZ)

Fiber count	400	640	800
Fiber diameter [mm]	0.25		
Cable diameter [mm] *	20	22	28.5
Cable weight [kg/km] *	290	400	600
Strength member [mm]	7/1.4		
Maximum load [N]	5700		
Bending radius [mm]	After installation		During installation
	200	220	285
	400	440	570

8-fiber ribbon type (Helical)

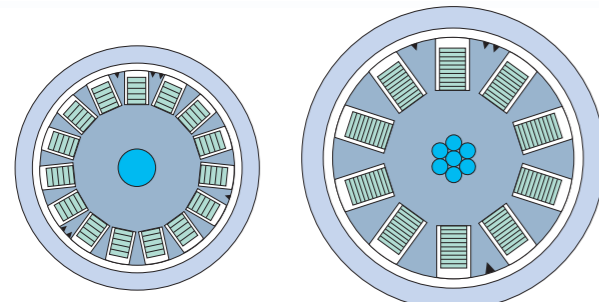
Fiber count	1000	1200
Fiber diameter [mm]	0.25	
Cable diameter [mm] *	23	31
Cable weight [kg/km] *	420	830
Strength member [mm]	7/2.0	
Maximum load [N]	11600	
Bending radius [mm]	After installation	
	230	310
	460	620

* Values of PE sheath cable.

Note: Values for some types may differ from the above tables. Please contact us for your specific inquiry.

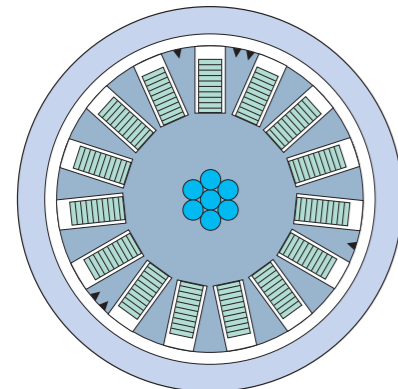
Ordering information

4-fiber ribbon type (SZ)	[Fiber count] [Fiber type] - SZ4R(EZB) - WB - E Ex. 300SM(PAPB)-SZ4R(EZB)-WB-E
8-fiber ribbon type (SZ)	[Fiber count] [Fiber type] - SZ8R(EZB) - WB - E Ex. 800SM(PAPB)-SZ8R(EZB)-WB-E
8-fiber ribbon type (Helical)	[Fiber count] [Fiber type] - TS8 - WB - E Ex. 1000SM(PAPB)-TS8-WB-E



300 fiber type

800 fiber type



1200 fiber type

Available fibers: SM, PAPB, 1G, 10G, 10G+

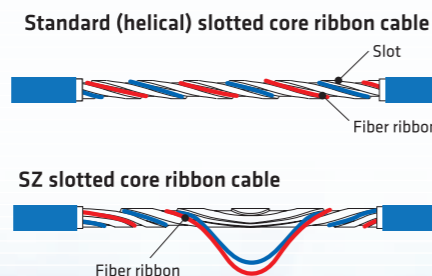
- ※1 Except 400, 640 and 800 fiber types.
- ※2 Available to 24, 60 and 100 fiber types.

"SZ slotted core ribbon cable" for easy mid-span joint

- Since required fiber ribbons can be picked up at any point of the cable without cable cutting, mid-span joint is easily available for demand increase after the cable installation.

What is "SZ slotted core"?

Optical cable is usually twisted the fiber in spirals, hence it is difficult to pick up some fiber at middle of the cable. The SZ slotted core ribbon cable has the twisted fiber with periodically reversed direction. This makes fiber ribbon to be picked up easily from middle of the cable.



19-inch cabling rack solution

19-inch cabling rack is used for cable termination of large cabling network in MDA or ZDA or EDA. Cabling rack products of Sumitomo Electric realize reliable and quick cable installation by the following features.

① Optical panel Y-OP4 series

Panel to terminate ribbon cable and to connect it to SC/LC connectors. Y-OP4 series with pre-terminated fan-out (FO) realize reliable and quick cable connection.

⇒P. 9, 10

② MPO Cassette · MPO Connectorized cable

MPO cassette is to connect MPO connectorized cable and SC/LC patchcord by built-in FO assembly. MPO connector realizes easy multi-fiber connection and max 192 fiber termination in 1U panel.

⇒P. 11, 16~21

③ High strength optical cord/cable

High strength optical cord/cable for patchcord and connectorized cable in and between rack. Realize high reliability wiring as resistant to kink and binding.

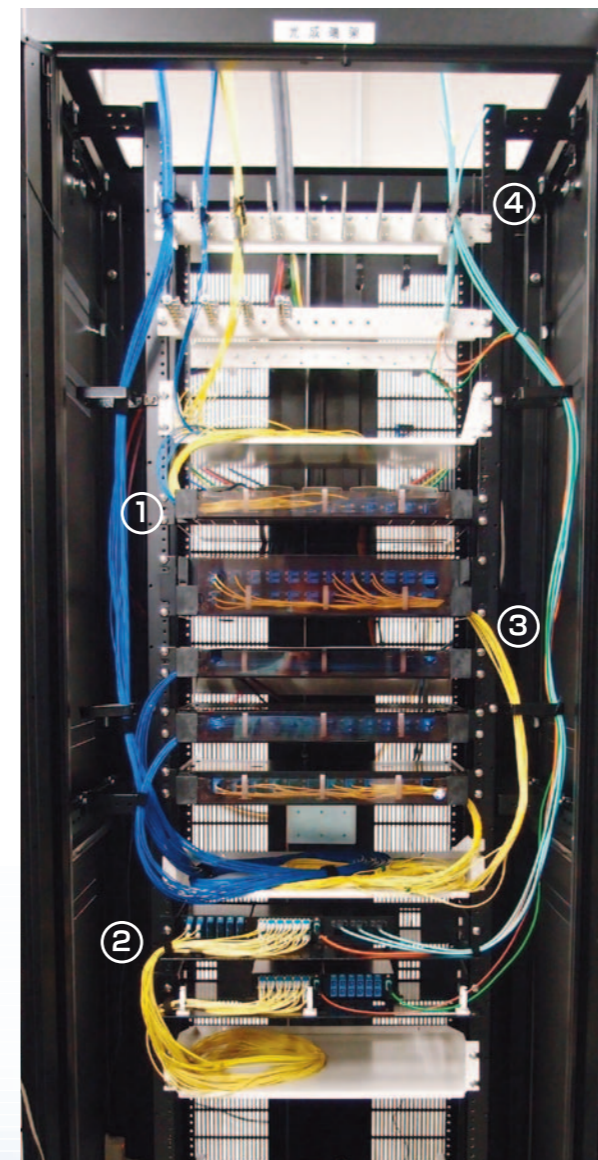
⇒P. 13

④ Accessories for 19 inch rack

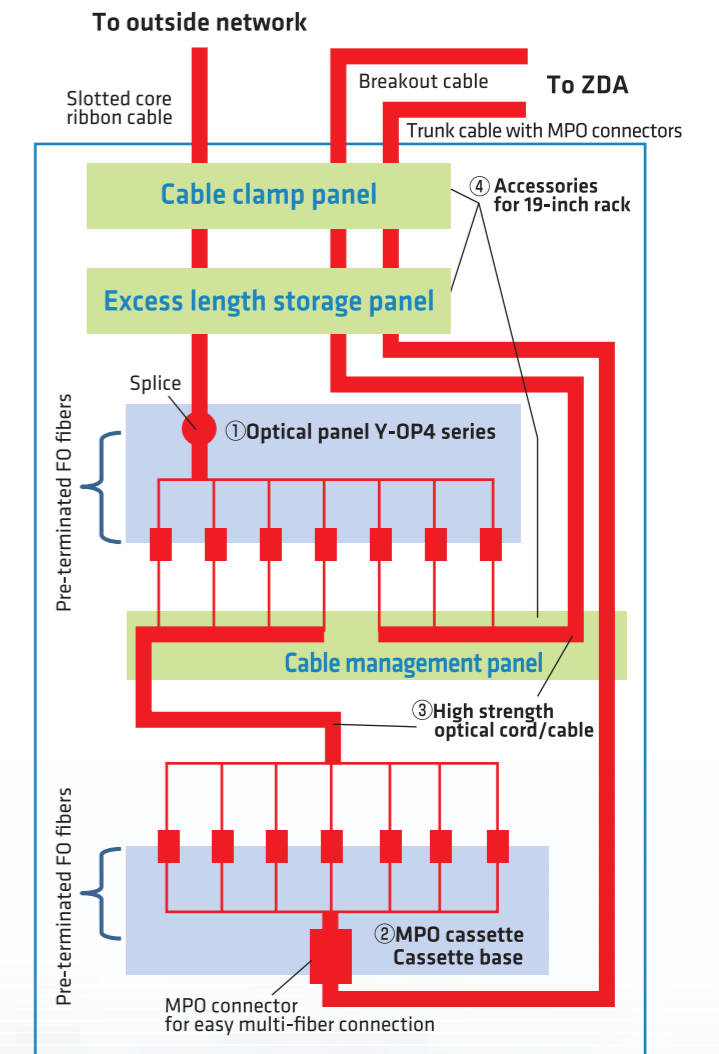
Wide range rack accessories including cable fixture, cable management panel etc. Enable various cable routing and termination in rack.

⇒P. 12

Example of cabling rack products



Cabling rack products



Cabling model

19-inch rack

19-inch network rack / cabling rack

The 19 inch rack suitable to cabling and mounting of network equipment in Data Center.

- 600mm width and 800mm width types available.
- The height can be chosen from 42U, 45U and 47U types.
- Light weight and strong structure.
- Split level side panels for convenient access to installed equipment.
- Dimensions conform to EIA-310E, IEC-60297-2.
- Tested to salt spray under ASTM-D610-01 and ASTM-B117.
- All materials comply to RoHS requirement.

Type	600mm width			800mm width		
	1,000mm			1,000mm		
Depth						
Height	42U	45U	47U	42U	45U	47U
Overall height: mm	1,994	2,127	2,216	1,994	2,127	2,216
Usable rack height	42U	45U	47U	42U	45U	47U
Net weight: kg	102	106	108	121	129	135
Maximum mounting depth: mm	890	890	890	890	890	890
Static load: kg	1,400	1,400	1,400	1,000	1,000	1,000



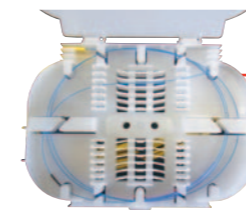
19-inch rack-mount optical panel

Optical panel [Y-OP4 series] **NEW**

- Fiber-slack slide system
- The lightweight housing of aluminum and plastic enables the installation by single person.
- High-density capacity allowing 100 fibers in 2U by SC connector
- Applicable for EIA/JIS-standard 19-inch rack.
- Various cable supports and cable management parts are available as options.

Splice tray

- Max 12 splices of single fiber or 6 splices of 4-fiber ribbon per tray.
- Can reduce the cord-end preparation time for termination.

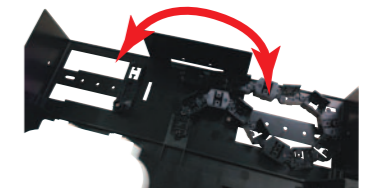


Cable guide

- Protect fiber and cord when connection unit is slide.

Cable clamps

- Add on for type up to 4 cables.
- Optional type: Max 6 cables in 1U, Max 12 cables in 2U.
- Clamp for indoor and drop cables are available.



Easy change of cable-entry direction from right to left side

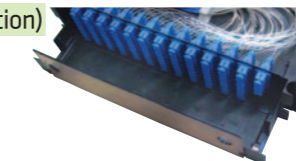
Adjustable bracket

- The mounting position of the bracket can be adjusted at 25-mm intervals.



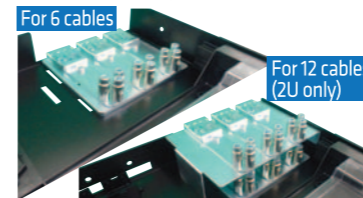
Front cord support, front panel (Option)

Product name:
For 1U : OP4-1FTR
For 2U : OP4-2FTR



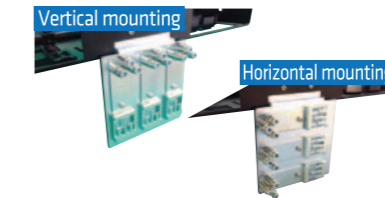
Cable clamps (Option)

Multi cable clamp kit



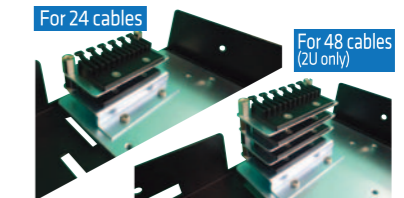
- Cable entry capacity : 6 or 12 cables
- Applicable cable diameter : ≤14mm
- Product name:
For 6 cables: OP4-MCL3
For 12 cables: OP4-MCL6

Rear mounting cable clamp kit



- Cable entry capacity : 2 or 6 cables
- Applicable cable diameter : ≤14mm
- Product name:
For 2 cables : OP4-RCL1
For 6 cables : OP4-RCL3

Drop cable clamp kit

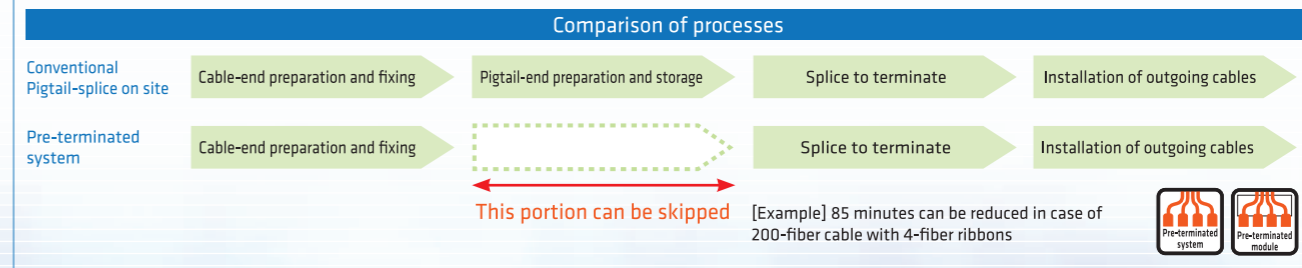


- Cable entry capacity : 24 or 48 cables
- Applicable cable diameter : 1.8 ~ 2.5 x 3.0 ~ 4.5mm
- Product name:
For 24 cables: OP4-DCL24
For 48 cables: OP4-DCL48

Features and benefits of pre-terminated system

Pre-terminated type Y-OP4 panels have Fan-out pigtailed (for ribbon cable) or Pigtailed (for single fiber cable) pre-installed at factory.

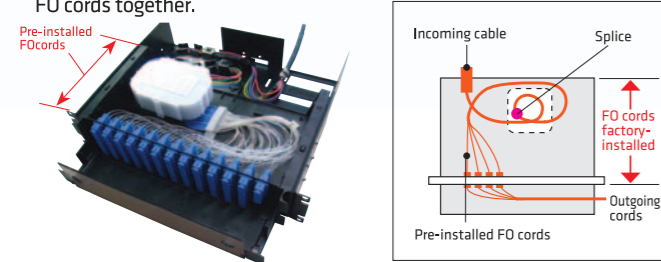
- No need of pigtail installation at site simplifies and shortens the cable installation work.
- Inspection of all pre-terminated fibers before shipment supports the improvement of installation quality.
- Pre-terminated pigtailed adopt bend insensitive fibers so that the compact wiring can achieve high density termination.



19-inch rack-mounted optical panel

Pre-terminated type with FO cords [Y-OP4-PC4FO]

- Termination panel for 4-fiber ribbon cable. 2-, 8-fiber types available.
- Pre-terminated type with simplified 4-fiber Fan-Out(FO) cords.
- Simplify and shorten the cable installation work
- Easy termination just by 4-fiber ribbon splicing to pre-installed FO cords.
- Easy to add/remove pre-installed FO cords and able to use common FO cords together.



* Front panel is optional.
* The product does not include cables or cords other than the pre-installed FO.

For SC

Type	1U	2U
Product name	Y-OP4-PC4FO(24C) (P1)<(P2)<(P3)<(O)	Y-OP4-PC4FO(40C) (P1)<(P2)<(P3)<(O) Y-OP4-PC4FO(48C) (P1)<(P2)<(P3)<(O) Y-OP4-PC4FO(100C) (P1)<(P2)<(P3)<(O)
Configuration	Splice + Connector	
Splice capacity (4-fiber ribbon)	6 splices (24 fibers) 10 splices (40 fibers) 12 splices (48 fibers) 25 splices (100 fibers)	
Connector/adaptor type	SC/SPC, SC/APC	
Weight	Approx. 3.0kg	Approx. 3.5kg Approx. 4.0kg

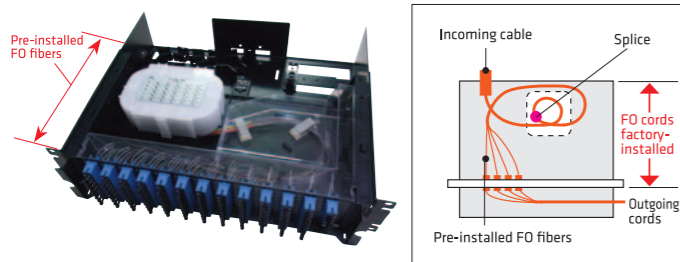
For LC

Type	1U	2U
Product name	Y-OP4-PC4FO(48C) (LC)<(P1)<(P2)<(O)	Y-OP4-PC4FO(96C) (LC)<(P1)<(P2)<(O)
Configuration	Splice + Connector	
Splice capacity (4-fiber ribbon)	12 splices (48 fibers) 24 splices (96 fibers)	
Connector/adaptor type	LC/SPC	
Weight	Approx. 3.0kg	Approx. 4.0kg

(Note) P1, P2 and P3 are defined in a box of the next page

Pre-terminated type with FO fibers [Y-OP4-PFO]

- Termination panel for 4-fiber ribbon cable. 2-, 8-fiber types available.
- Pre-terminated type with 4-fiber Fan-Out(FO) fibers.
- Simplify and shorten the cable installation work
- Easy termination just by 4-fiber ribbon splicing to pre-installed FO fibers.



For SC

Type	1U	2U
Product name	Y-OP4-PFO(24C) (P1)<(P2)<(P3)<(O)	Y-OP4-PFO(40C) (P1)<(P2)<(P3)<(O) Y-OP4-PFO(48C) (P1)<(P2)<(P3)<(O) Y-OP4-PFO(100C) (P1)<(P2)<(P3)<(O)
Configuration	Splice + Connector	
Splice capacity (4-fiber ribbon)	6 splices (24 fibers) 10 splices (40 fibers) 12 splices (48 fibers) 25 splices (100 fibers)	
Connector/adaptor type	SC/SPC, SC/APC	
Weight	Approx. 2.5kg	Approx. 3.5kg

For LC

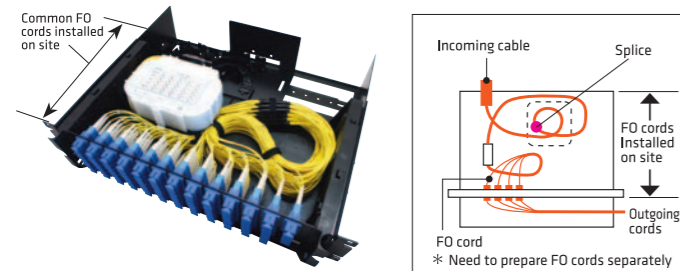
Type	1U	2U
Product name	Y-OP4-PFO(48C) (LC)<(P1)<(P2)<(O)	Y-OP4-PFO(96C) (LC)<(P1)<(P2)<(O)
Configuration	Splice + Connector	
Splice capacity (4-fiber ribbon)	12 splices (48 fibers) 25 splices (100 fibers)	
Connector/adaptor type	LC/SPC	
Weight	Approx. 2.5kg	Approx. 3.5kg

(Note) P1, P2 and P3 are defined in a box of the next page

* Passive components such as splitter cab be accommodated. Please contact us for the detail.

Conventional type for 4-fiber ribbon cable [Y-OP4-FO]

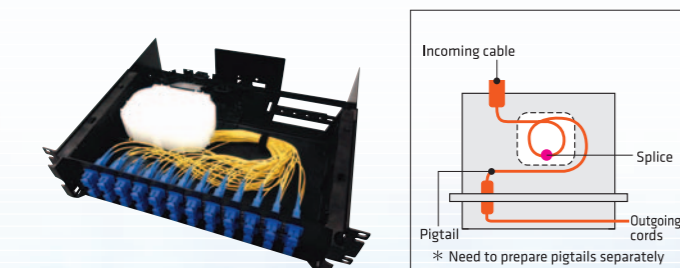
- Termination with common FO cords suitable for 4-fiber ribbon cable.



* The product does not include cables or cords other than the module.

Conventional type for single-fiber cable [Y-OP4-U]

- Termination suitable for single-fiber cable with common pigtailed.



* The product does not include cables or cords other than the module.

For SC

Type	1U	2U
Product name	Y-OP4-FO(24C) (P1)<(P2)<(O)	Y-OP4-FO(40C) (P1)<(P2)<(O) Y-OP4-FO(48C) (P1)<(P2)<(O) Y-OP4-FO(100C) (P1)<(P2)<(O)
Configuration	Splice + Connector	
Splice capacity (4-fiber ribbon)	6 splices (24 fibers) 10 splices (40 fibers) 12 splices (48 fibers) 25 splices (100 fibers)	
Connector/adaptor type	SC/SPC, SC/APC	
Weight	Approx. 2.5kg	Approx. 3.5kg

For LC

Type	1U	2U
Product name	Y-OP4-FO(48C) (LC)<(P1)<(O)	Y-OP4-FO(96C) (LC)<(P1)<(O)
Configuration	Splice + Connector	
Splice capacity (4-fiber ribbon)	12 splices (48 fibers) 24 splices (96 fibers)	
Connector/adaptor type	LC/SPC	
Weight	Approx. 2.5kg	Approx. 3.5kg

(Note) P1, P2 and P3 are defined in a box of the next page

For SC

Type	1U	2U
Product name	Y-OP4-U(24C) (P1)<(P2)<(O)	Y-OP4-U(48C) (P1)<(P2)<(O)
Configuration	Splice + Connector	
Splice capacity (Single fiber)	24 splices (24 fibers) 48 splices (48 fibers)	
Connector/adaptor type	SC/SPC, SC/APC	
Weight	Approx. 2.5kg	Approx. 3.5kg

For LC

Type	1U	2U
Product name	Y-OP4-U(24C) (LC)<(P1)<(O)	Y-OP4-U(48C) (LC)<(P1)<(O)
Configuration	Splice + Connector	
Splice capacity (4-fiber ribbon)	24 splices (24 fibers) 48 splices (48 fibers)	
Connector/adaptor type	LC/SPC	
Weight	Approx. 2.5kg	Approx. 3.5kg

(Note) P1, P2 and P3 are defined in a box of the next page

Specifications common to Y-OP4 series products

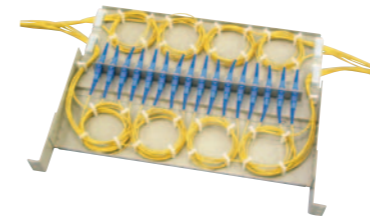
	1U	2U
Size (height)	480 (W) × 372 (D) × 43.5 (H) mm (1U)	480 (W) × 372 (D) × 88 (H) mm (2U)
Dimensions		
Structure	Slide-type, Fixed-type	
Connector/Adapter type	SC, SC-APC, LC	
Cable entry capacity	≤15mm	
Installation	EIA / JIS 19-inch rack	
Paint color	Black	

Ordering code **Y-OP4-○<(O)C><(P1)<(P2)<(P3)<(O)>**

- U Single-fiber splice + Connector
- FO 4-fiber ribbon splice + Connector
- PFO 4-fiber ribbon splice + Connector (Pre-terminated FO fibers)
- PC4FO 4-fiber ribbon splice + Connector (Pre-terminated FO cords)
- SC Duplex SC adapter for PC/SPC (blue)
- SC-APC Duplex SC adapter for APC (green)
- LC LC quadruple adapter (other than Y-OP4-PFO) LC 10-fold adapter (Y-OP4-PFO only)
- Y-OP4-PFO/-PC4FO only:
 - SM SM fiber
 - GI GI fiber
 - ※ GI : only for MM(50), MM(62.5) is not available
- S Slide-type
- F Fixed-type

Patch Panel [Y-PP]

- MAX 32 connector connections
- Patch panel for 19inch rack



* The product does not include cables or cords.

Type	1U Type	2U Type
Product name	Y-PP-CP1><P2>	
Connector type	SC, LC, 8MPO, 12MPO, 24MPO	SC, LC, 8MPO, 12MPO, 24MPO
Adapter	16	24, 32
Max fiber count	16 384	32 768
Weight	2.5kg	3.5kg

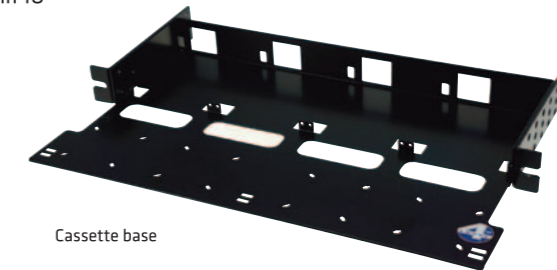
Parameter	Item	Options
P1	Adapter type	SC, LC, 8MPO, 12MPO, 24MPO
P2	Number of adapters	16, 24, 32

MPO cassette solution

- MPO cassette to connect MPO connectorized cable to SC or LC patchcord
- To be installed to 19-inch rack and realize Plug & Play
- Up to 192-fiber connection by 24-fiber cassette in 1U

MPO cassette base

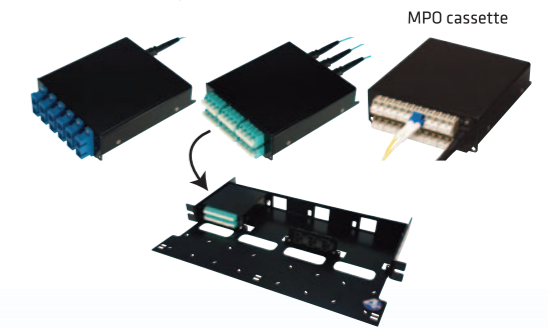
Part name	MPO cassette base A	MPO cassette base B
Part number	AS360501	AS360591
Size:mm	470(W)×210(D)×43.5(H) (without bracket)	462(W)×139(D)×43.5(H) (without bracket)
19-inch rack-mountable cord tray	✓	✓
Number of MPO cassette per cassette base	4 cassettes/cassette base	4 cassettes/cassette base
Number of adaptor panel per cassette base	4 panels/cassette base	4 panels/cassette base



MPO cassette

Fiber count	Fiber type	MPO	MPO adaptor location	Single fiber connector	Insertion loss: dB	Ordering code	
12	OS1	12MPO×1	Rear	SC×12	1.25	CSR-SM-1X12MPOM-SC-SD	
					0.65	CSR-SM-1X12MPOM-SC-LL	
	OM3	12MPO×1	Rear	SC×12	1.05	CSR-OM3-1X12MPOM-SC-SD	
					0.55	CSR-OM3-1X12MPOM-SC-LL	
			Front	SC×12	1.05	CSF-OM3-1X12MPOM-SC-SD	
					0.55	CSF-OM3-1X12MPOM-SC-LL	
24	OS1	12MPO×2	Rear	LC×24	1.25	CSR-SM-2X12MPOM-LC-SD	
					0.65	CSR-SM-2X12MPOM-LC-LL	
	OM3	12MPO×2	Rear	LC×24	1.05	CSR-OM3-2X12MPOM-LC-SD	
					0.55	CSR-OM3-2X12MPOM-LC-LL	
			Front	LC×24	1.05	CSF-OM3-2X12MPOM-LC-SD	
					0.55	CSF-OM3-2X12MPOM-LC-LL	
	24MPO×1	Front	LC×24	1.05	CSF-OM3-1X24MPOM-LC-SD		
				0.95	CSF-OM3-1X24MPOM-LC-LL		
	Size	108(W)×116(D)×39(H)mm (excluding protrusion)					

The MPO plugs inside MPO cassettes are fitted with guide pins.



MPO adaptor panel

- Mountable on MPO cassette base
- Six MPO adaptors mountable on a MPO adaptor panel

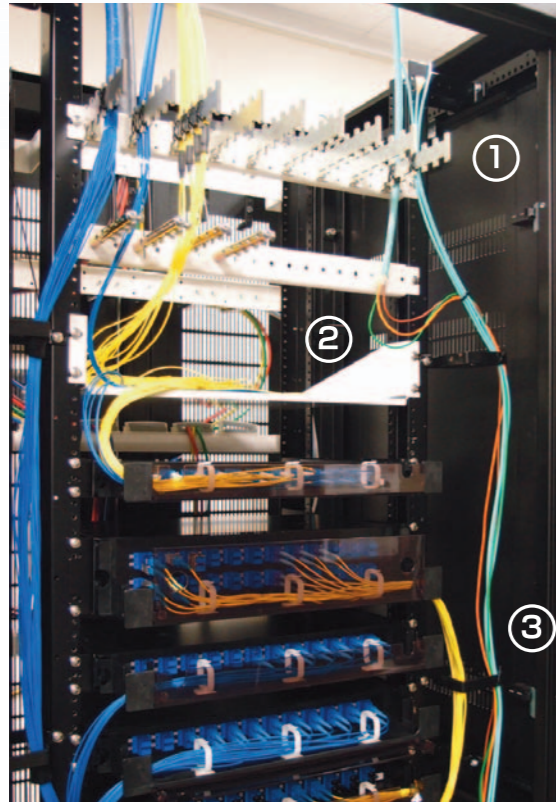
Part name	Part number
MPO adaptor panel 6 for MPO cassette base	AS238550



Accessories for 19-inch rack

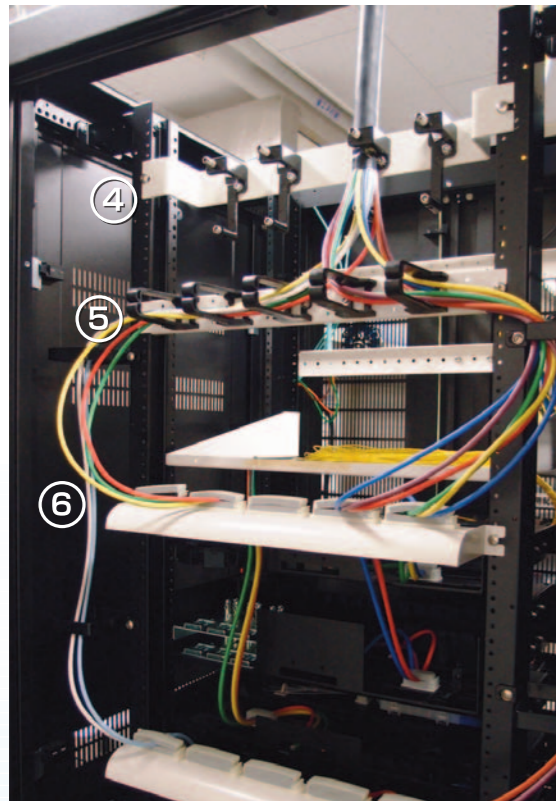
Various accessories for 19-inch rack are offered with rack and panel to complete the cabling design.

Front



- ① In-plant cable/cord fixture panel
· For securing In-plant cable/cord
- ② Excess length storage panel
· For storing the excess length of cords
- ③ Cable holder
· For wiring cords vertically on the side of the rack
- ④ Cable clamp panel
· For securing out-side-plant cable/trunk cable

Back



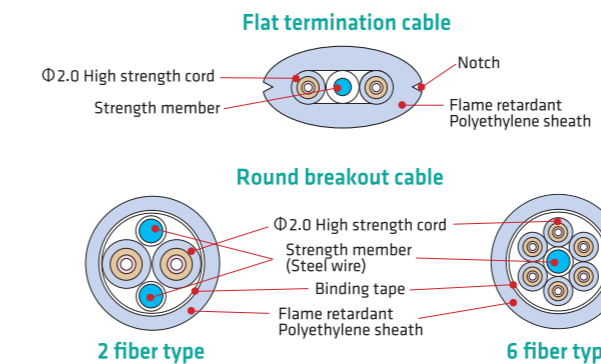
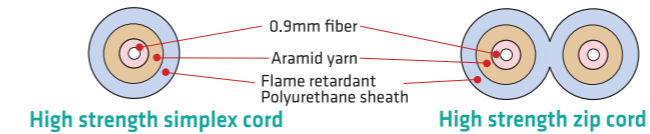
- ⑤ Cable management panel
· For wiring cords horizontally to the sides
- ⑥ Bending guide
· For wiring cords to each panel with proper bending radius

High strength optical cord / cable for intra-rack and inter-rack cabling

High strength cord / cable

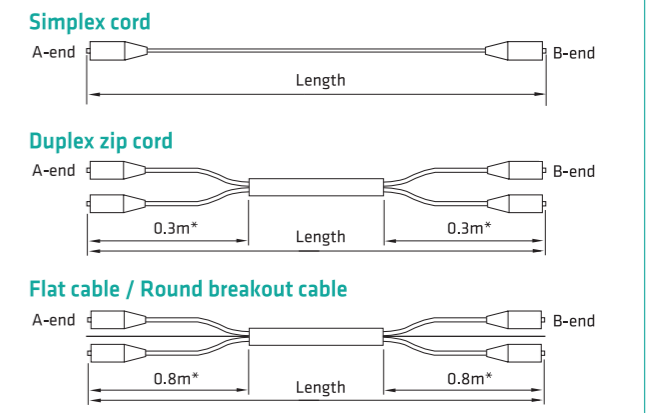
Double strength cord against conventional type with resistance to kink

- Strong to cord breakage due to the nip by door etc.
- Easy cabling and coiling.
- Resistant to kink and residual bending.
- Applicable to flat cable and round breakout cable.



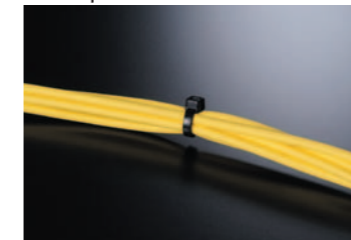
Cord type	Simplex	Duplex (Zip)
Fiber diameter [mm]	0.9	0.9
Cord diameter [mm]	2.0	2.0×4.0
Cord weight [kg/km]	4	8
Maximum load [N]	80	160
Bending radius	Fiber bending radius	
Flame retardancy	JIS C 3005(Horizontal test)	

Cable type	Flat	Round									
		2	4	6	8	12	16	24	32		
Fiber count	2	2	4	6	8	12	16	24	32		
Fiber diameter [mm]	0.9	0.9									
Cord diameter [mm]	2.0	2.0									
Cable diameter [mm]	4.0×8.0	6.5	7.5	9.0	10.0	13.0	16.0	15.0	18.0		
Cable weight [kg/km]	40	45	55	65	85	140	215	175	250		
Maximum load [N]	240	480	460	460	460	660	660	660	660		
Bending radius [mm]	40	65	75	90	100	130	160	160	180		
Flame retardancy	JIS C 3005(Inclining test)										

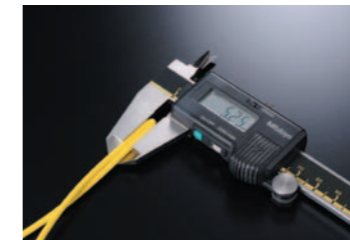


* The length can be changed by order.

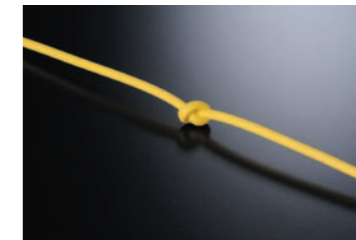
Examples



① Binding with 9kgf
【No loss increase】



② Doubling back
【No fiber breakage】

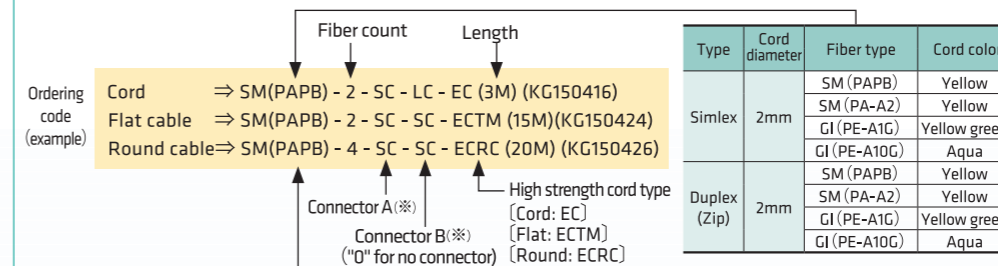


③ Knotting
【No fiber breakage】

Not for operation condition. Fiber may have the shorter lifetime wound in less than minimum bending radius.

Ordering information

Connector types to be chosen from p32**.



Type	Cord diameter	Fiber type	Cable color	Cord color	Fiber count								
					2	4	6	8	12	16	24	32	
Flat	2mm	SM (PAPB)	Yellow	Yellow	○	○	○	○	○	○	○	○	○
		GI (PE-A1G)	Yellow green	Yellow green	○	○	○	○	○	○	○	○	○
Round	2mm	SM (PAPB)	Yellow	Yellow	○	○	○	○	○	○	○	○	○
		GI (PE-A1G)	Yellow green	Yellow green	○	○	○	○	○	○	○	○	○

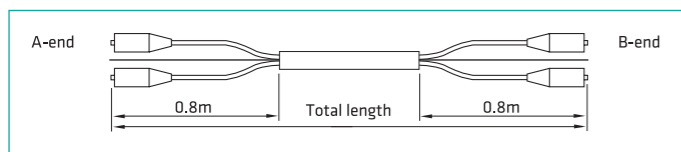
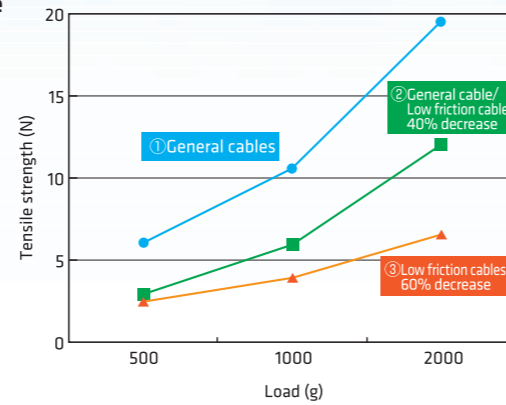
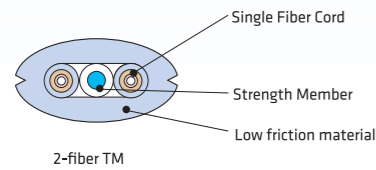
* Standard PVC jacket types are also available.

Low friction optical cable for Data Center cabling

Smooth and slippery surface cable having up to 60% lower friction force

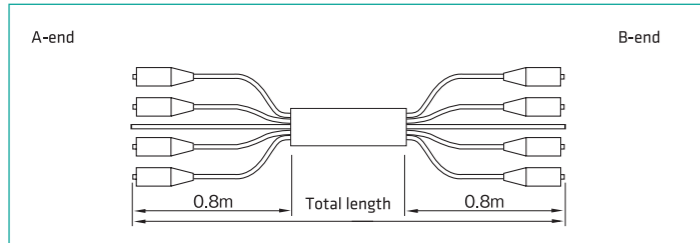
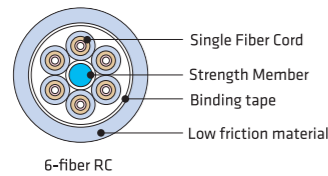
- Make cable installation and removal work easy

Flat Termination Cable (TM)



Item	Specification
Fiber count	2
Optical fiber diameter [mm]	0.9
Cord sheath diameter [mm]	1.7
Cable sheath diameter [mm]	3.5x6.5
Weight [kg/km]	40
Maximum load [N]	240
Bending radius [mm]	30
Flame retardancy	JIS C 3005(Inclining test)

Round Breakout Cable (RC)



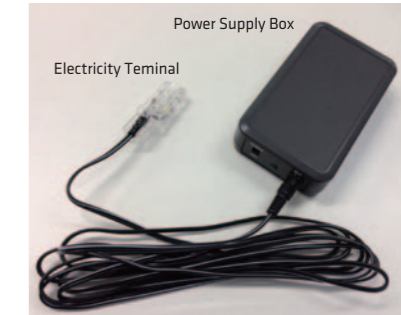
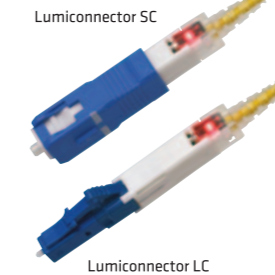
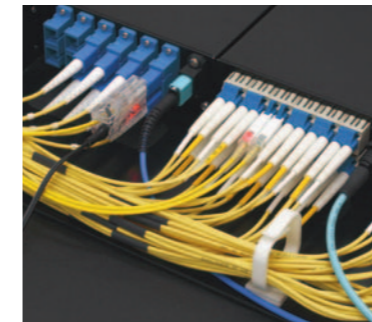
Item	Specification							
Fiber count	2	4	6	8	12	16	24	32
Optical fiber diameter [mm]	0.9							
Cord sheath diameter [mm]	1.7							
Cable sheath diameter [mm]	6.0	6.5	7.5	8.5	11	13	13	15
Weight [kg/km]	40	45	50	65	100	140	130	180
Maximum load [N]	480	240	240	240	430	430	430	660
Bending radius [mm]	40	40	45	50	70	80	80	90
Flame retardancy	JIS C3005 (Inclining test)							

LED identifiable optical connector / Light detection adapter

LED identifiable connector - Lumiconnector™ NEW
 Lumiconnector™ patchcord have LED at both end connectors linked by copper twist line.
 Both LEDs are brightened when the Checker (power supply) is connected to one end.

- Can identify the other end of the patchcord without the disconnection from panel.
- Prevent incorrect disconnection of patchcord.
- Standard SC and LC connector interface.
- High strength cord and Termination cable types also available.
- Max distance of light emission: 550m for standard cord, 250m for high strength cord.

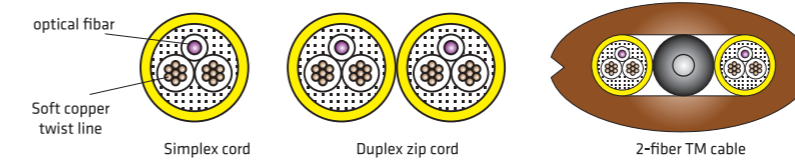
Connector name	LUSC		LULC	
	SC/SPC	SC/PC	LC/SPC	LC/PC
Connector type	SC/SPC	SC/PC	LC/SPC	LC/PC
Fiber type	SM(PAPB)	GI(PE-A10G)	SM(PAPB)	GI(PE-A10G)
Insertion Loss	≤0.5dB	≤0.3dB	≤0.5dB	≤0.3dB
Return Loss	≥40dB	≥25dB	≥40dB	≥25dB
Cord diameter [mm]	2mm		2mm	
Coupling method	push-on		push-on	
Standard	IEC 61754-4		IEC 61754-20	



example

Lumiconnector LC

Checker (Power Supply)



type	Simplex cord standard type	Simplex cord high strength cord	Duplex cord standard type	Duplex cord high strength cord	2-fiber TM cable high strength cord
Max distance of light emission [m]	550	250	550	250	250
Cord diameter [mm]	2	2	2x4	2x4	4x8
Cord weight [kg/km]	6	4.5	12	9	40
Maximum load [N]	80	80	160	160	240

Checker

name	LU-Power supply
Ordering code	AS238347
Power Supply Box size [mm]	105x70x27
Weight [kg]	150
Power supply	9V form alkali dry cell

Ordering information

Ordering code (example): **2 - LUSC · SPC - LULC · SPC - SM (PAPB) - 2 - Y - L - 0.3 - 0.3**

↑ Fiber count
 ↑ A-end connector
 ↑ B-end connector
 ↑ Fiber type
 ↑ Cord color
 ↑ Length (m)

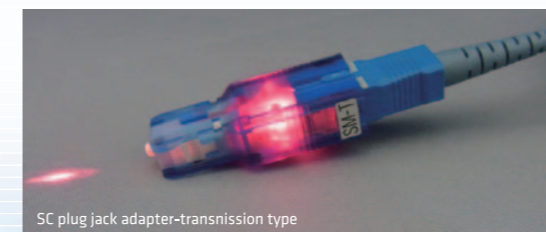
structure	Fiber count	Fiber type	Cord color
Simplex cord	1	SM (PAPB)	Y (yellow)
Duplex cord	1	GI (PE-A10G)	AQ (aqua)
	2	SM (PAPB)	Y (yellow)
	2	GI (PE-A10G)	AQ (aqua)

Light detection adapter

The light detection adapter is brightened by visible light (650nm) insertion.

- Easy identification of patchcord end.
- 2 adapter types available.
- Transmission type: Pass the visible light with low insertion loss.
- Blocking type: Stop the visible light with more than 30dB insertion loss.
- No influence to transmission wavelength.

Product name	Light detection adapter	
Structure	SC plug jack type	
Optical fiber	SM (λ = 1310nm, 1550nm)	MM (GI50) (λ = 850nm, 1300nm)
Insertion Loss	≤1.2dB	≤0.8dB
Return Loss	≥40dB	≥25dB
Standard	IEC 61754-4 equivalency	



SC plug jack adapter-transmission type

Ordering information

2 - SC · UPC - SC · UPC - SM (PAPB) - RCLE1.7 - Y - 10 - Y - 0.8 - 0.8

↑ Fiber count
 ↑ A-end connector
 ↑ B-end connector
 ↑ Fiber type
 ↑ Cable type
 ↑ Cable color
 ↑ Cord color
 ↑ Total length

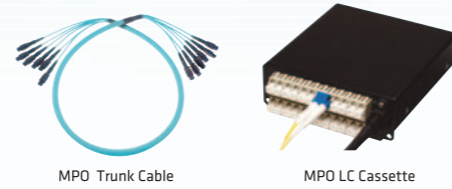
TMLE: Low friction termination cable
 RCLE: Low friction round cable

Fiber type	Connector type		Cable type	Fiber type	Cable color	Cord color	Fiber type									
	Connector	Polishing					2	4	6	8	12	16	24	32		
SM (PAPB)	SC, LC	UPC, APC	TMLE1.7	SM (PAPB)	Y (Yellow)	Y (Yellow)	○									
GI (PE-A1G)	SC, LC	PC		GI (PE-A1G)	B (Blue)	B (Blue)	○									
GI (PE-A10G)	SC, LC	PC		GI (PE-A10G)	AQ (Aqua)	AQ (Aqua)	○									
			RCLE1.7	SM (PAPB)	Y (Yellow)	Y (Yellow)	○	○	○	○	○	○	○	○	○	○
				GI (PE-A1G)	B (Blue)	B (Blue)	○	○	○	○	○	○	○	○	○	○
				GI (PE-A10G)	AQ (Aqua)	AQ (Aqua)	○	○	○	○	○	○	○	○	○	○

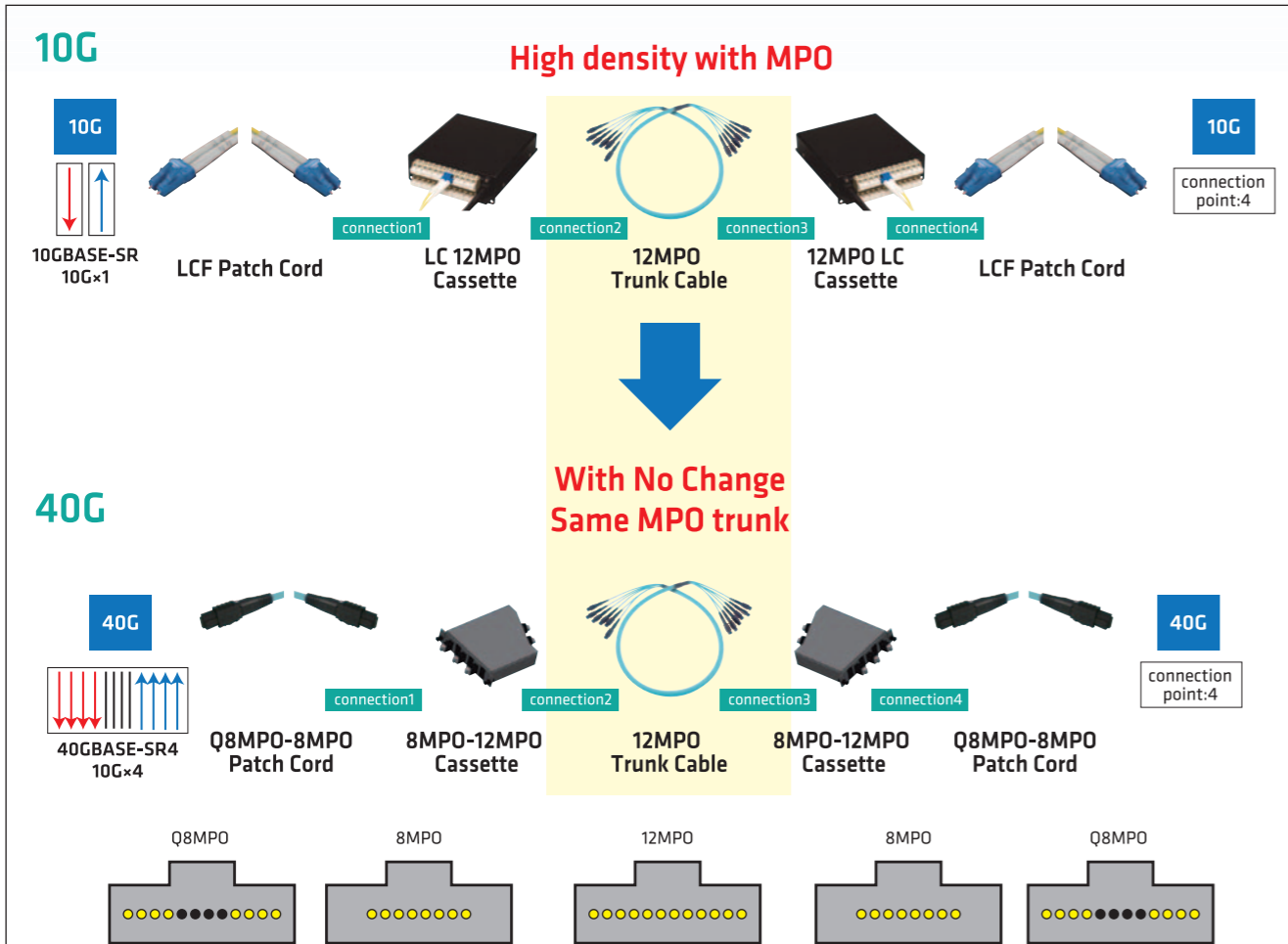
MPO connector solution

High Density and Quick Cabling

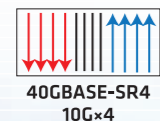
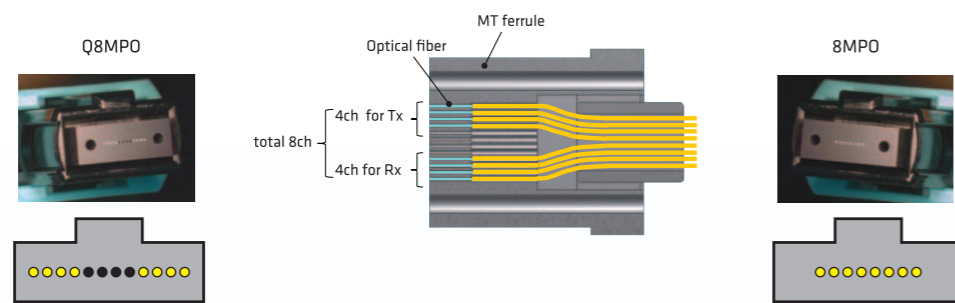
- Using MPO connector realize high density greatly.
- Plug & Play make cable installation smooth.



12MPO wiring solution



Q8MPO connector - Benefits of Q8MPO-8MPO patch cord -



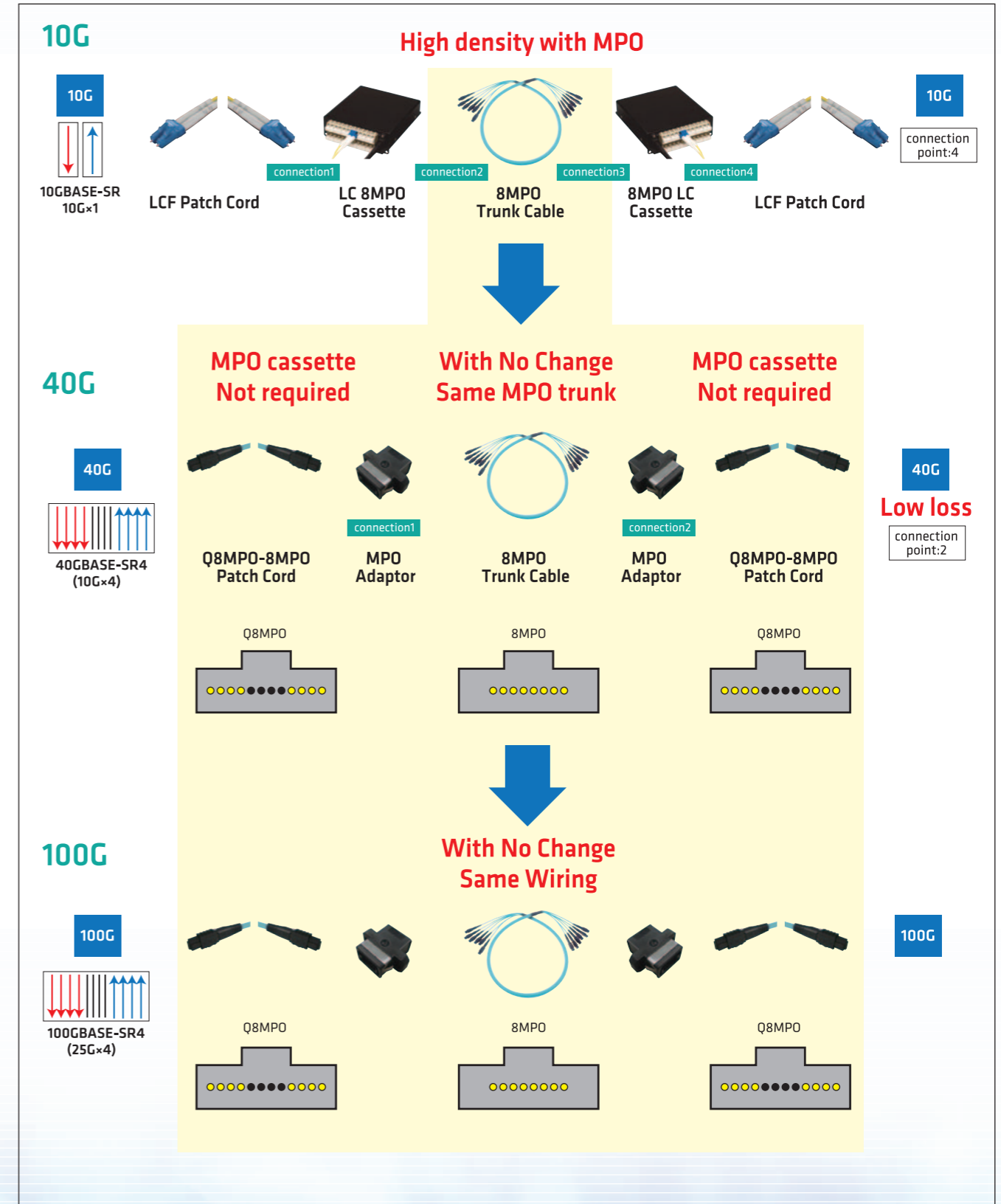
- Only both side 4 fibers used in QSFP+ are embedded in Q8MPO. 8-fiber round cord can be connected to QSFP+.
- The other end has standard 8MPO.
- No waste fiber and realize Low Cost.

4th LEVEL 8Core ~ 8MPO Wiring Solution ~

Minimun Cost and Minimum Insertion loss

- Construct the network with 8 fibers.
- MPO Cassette not required from 10G To 40G/100G upgrade miuimize cost.
- Fewer connection point realize minimun insertion loss.

8Core 8MPO wiring solution

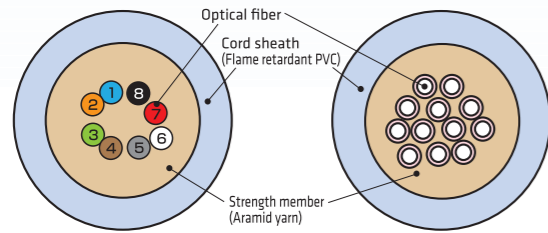


MPO connector - Cable assembly

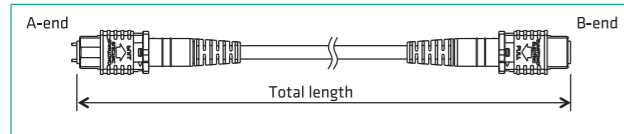
Round cord with MPO connectors

- 8-fiber round cord: Optimized for 40GBASE-SR4 cabling **NEW**
- Round cross section for any direction bending at installation
- UL1651 flammability (Plenum grade)

8Core 8-fiber round cord **NEW** 12-fiber round cord



Fiber count	8	12	24
Fiber diameter [mm]	0.25	0.25	0.25
Cord diameter [mm]	3.0	3.0	3.8
Cord weight [kg/km]	8	9	13
Maximum load [N]		100	
Bending radius [mm]		25	



Ordering information

A-end connector B-end connector Cord type (Round cord) Total length (m)

Ordering code (example) **12 - 12MPO/R - 12MPO/R - GI(10G) - RND - AQ - LL - F - 3**

Fiber count	Fiber type	Connector and polishing type	Fiber code	Cord color	MPO polarity (TIA-568-C.3)	Note
8	OM3	8MPO/R	GI(10G)	AQ	Type-A	*1
	OM3	Q8MPO/R	GI(10G)	AQ	Type-B	*2
12	OS2	12MPO/A	SM(PAPB)	Y	Type-A	-
	OM3	12MPO/R	GI(10G)	AQ	Type-A	*1
12	OM3	12MPO/R	GI(10G)	AQ	Type-B	*2
	OM4	12MPO/R	GI(10G+)	AQ	Type-A	*1
24	OS2	24MPO/A	SM(PAPB)	Y	-	-
	OM3	24MPO/R	GI(10G)	AQ	-	*3
24	OM4	24MPO/R	GI(10G+)	AQ	-	*3

*1: Ex. 10GBASE-SR
*2: Ex. 40GBASE-SR4
*3: Ex. 100GBASE-SR10

Insertion loss grade	Code
Standard loss	SD
Low loss	LL

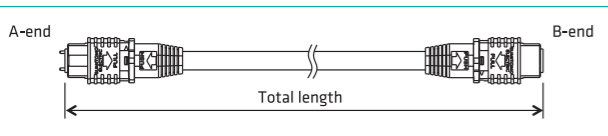
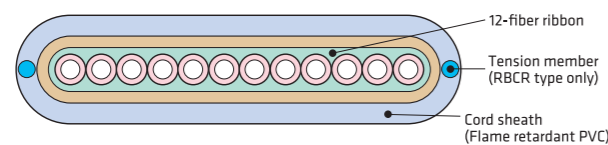
Configuration of MPO guide pin	Code
Male to Male	M
Female to Female	F
Male to Female	MF

Color code	Y	AQ
Color	Yellow	Aqua

Ribbon cord with MPO connectors

- Flat multi-fiber cord with 8 or 12 fiber ribbon
- RBCR type having tension member enables max 300m connection
- UL1666 flammability (Riser grade)

12-fiber ribbon cord



Fiber count	8-fiber ribbon with tension member	12-fiber ribbon with tension member
Ribbon dimension [mm]	0.4x2.1	0.4x3.1
Cord weight [kg/km]		0.25
Cord dimension [mm]	2.5x4.5	2.5x4.9
Maximum load [N]		220
Bending radius [mm]		30
Flame retardant	UL 1666 RISER	

Ordering information

A-end connector B-end connector Total length (m)

Ordering code (example) **8 - 8MPO/A - 8MPO/A - SM - RBCR - Y - LL - F - 3**

Fiber count	Fiber type	Connector and polishing type	Fiber code	Configuration	Cord color	MPO polarity (TIA-568-C.3)
8	OS1	8MPO/A	SM	RBCR	Y	Type-A
	OS1	12MPO/A	SM	RBCR	Y	Type-A
12	OM2	12MPO/R	GI(50)	RBCR	D	Type-A
	OM3	12MPO/R	GI(10G)	RBC	AQ	Type-A
	OM4	12MPO/R	GI(10G+)	RBC	AQ	Type-A

Insertion loss grade	Code
Standard loss	SD
Low loss	LL

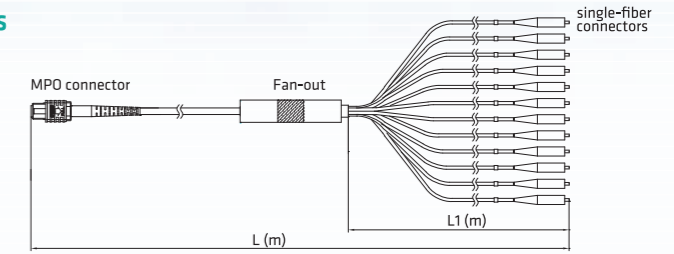
Configuration of MPO guide pin	Code
Male to Male	M
Female to Female	F
Male to Female	MF

Color code	Y	D	AQ
Color	Yellow	Orange	Aqua

MPO connector - Cable assembly

Fan-out assembly with MPO and single fiber connectors

- Fan-out assembly with MPO connector at one end and single fiber connector at the other end
- Suitable to connect MPO connectorized cable and patch panel / equipment with SC / LC connector



Ordering information

A-end connector B-end connector Total length (m) Fan-out length (0.2 to 2m available)

Ordering code (example) **12 - 12MPO/R - LC - GI(10G) - FO - RND - AQ - SD - M - L - L1**

Fiber count	Fiber type	MPO connector and polishing type	Single fiber connector	Fiber code	Configuration	Cord color
8	OS1	8MPO/A	P1 · SPC	SM	FO-RBCR	Y
	OS1	12MPO/A	P1 · SPC	SM	FO-RND	Y
12	OM3	12MPO/R	P1	GI(10G)	FO-RND	AQ
		Q8MPO/R	P1	GI(10G)	FO-RND	AQ
	OM4	12MPO/R	P1	GI(10G+)	FO-RND	AQ
		Q8MPO/R	P1	GI(10G+)	FO-RND	AQ

P1: selectable single fiber connector in page 32

Color code	Y	AQ
Color	Yellow	Aqua

Insertion loss grade	Code
Standard loss	SD
Low loss	LL

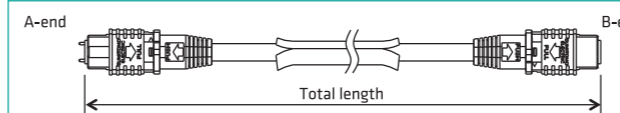
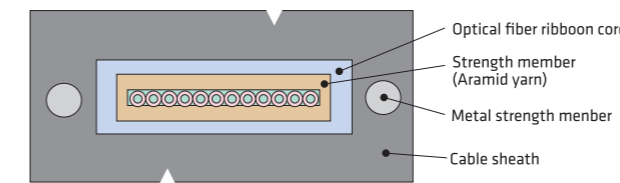
Configuration of MPO guide pin	Code
Male	M
Female	F

*Q8MPO Fan-out has 8 single fiber connectors

Multi-fiber ribbon cord cable with MPO connectors

- Ruggedized cable with 12-fiber ribbon cord
- Suitable to rack-to-rack connection because of the cable sheath over the ribbon cord for mechanical strength
- Fan-out assembly available

Fiber count	12
Ribbon dimension [mm]	0.3x3.1
Cord dimension [mm]	1.5x4.5
Cable dimension [mm]	3.5x7.5
Cable weight [kg/km]	45
Maximum load [N]	480
Bending radius [mm]	35



Ordering information

A-end connector B-end connector Total length (m)

Ordering code (example) **12 - 12MPO/R - 12MPO/R - GI(10G) - RBCA - AQ - LL - F - 3**

Fiber count	Fiber type	Connector and polishing type	Fiber code	Cord color	MPO polarity (TIA-568-C.3)
12	OS1	12MPO/A	SM	Y	Type-A
	OM2	12MPO/R	GI(50)	YG	Type-A
	OM3	12MPO/R	GI(10G)	AQ	Type-B
		12MPO/R	GI(10G)	AQ	Type-B

Color code	Y	YG	AQ
Color	Yellow	Yellow green	Aqua

Insertion loss grade	Code
Standard loss	SD
Low loss	LL

Configuration of MPO guide pin	Code
Male to Male	M
Female to Female	F
Male to Female	MF

Ordering information (MPO fan-out type)

A-end connector B-end connector Total length (m) Fan-out length (m)

Ordering code (example) **12 - MPO/A-SC.SPC - SM - FO - RBCA - Y - LL - F - 50 - 0.8**

Fiber count	Fiber type	Connector and polishing type	Connector and polishing type	Fiber code	Configuration	Cord color
12	OS1	12MPO/A	P1 · SPC	SM	FO-RBCA	Y
	OM2	12MPO/R	P1	GI(50)	FO-RBCA	YG
	OM3	12MPO/R	P1	GI(10G)	FO-RBCA	AQ

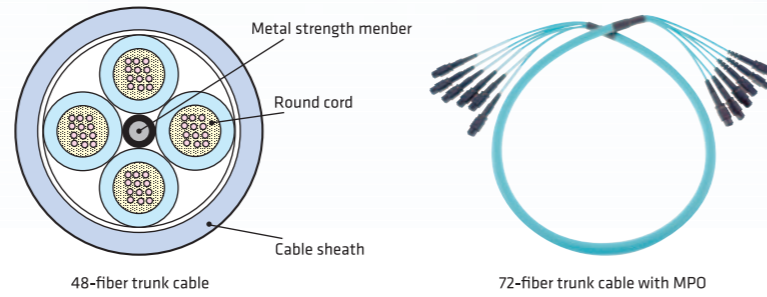
Configuration of MPO guide pin	Code
Male	M
Female	F

Insertion loss grade	Code
Standard loss	SD
Low loss	LL

MPO connector - Cable assembly

Trunk cable with MPO connectors (Break-out cable)

- Break-out cable with 8-fiber or 12-fiber round cord for trunk cable
- Suitable to MPO connectorized cable because of fiber protection by round cord till MPO end
- Realize Plug & Play with combination of MPO cassette



Connector cleaner

CLETOP (Reel Type)

- Designed to achieve high quality cleaning for any operator without alcohol
- Cleaning tape is replaceable and cost effective.
- One cleaning tape can be used for over 400 wipes.



Product name	CLETOP(B)	CLETOP(MPO)
Part no.	AS740638	AS740639
Applicable connector	SC, LC MPO w/o pin	MT MPO with pin
Size(mm)	130W×75H×40D	
Weight(g)	160	
Usage count	400	

Consumables		
Product name	Replacement reel blue (6pcs/set)	Replacement reel white (6pcs/set)
Part no.	AS740640	AS740641

NEOCLEAN™-M Pen Type Cleaner (for MPO)

- One-push operation with no special skills required.
- Over 600 cleanings
- Compact design with good workability.
- In addition of optical port adaptors, attaching the cap (included) allows you to clean plugs too.



Product name	NEOCLEAN-M
Part no.	AS740998
Applicable connector	MPO
Applicable end face	Flat and 8 degree angle
Size(mm)	197L×15W×51H
Usage count	600

Direct Attach Cable with Micro Coax

Direct Attach Cable (DAC) 1~3m(Micro coaxial cable) NEW

- Outline**
 - Supporting 10/40Gbps Ethernet for Datacenter interconnect
 - Compliant with SFP+ and QSFP+ MSA
 - Application**
 - Interconnection with 10/40G Ethernet for switches, servers, routers and storage systems, etc.
 - Features**
 - Using micro coaxial cable
 - Flexible and easy to handle compared to Twinax cable
 - Minimum bending radius can be equal to the cable outer radius
- Cable outer diameter: SFP+(1m) 3.2mm SFP+(3m) 3.6mm
QSFP+(1m) 4.9mm QSFP+(3m) 6.3mm

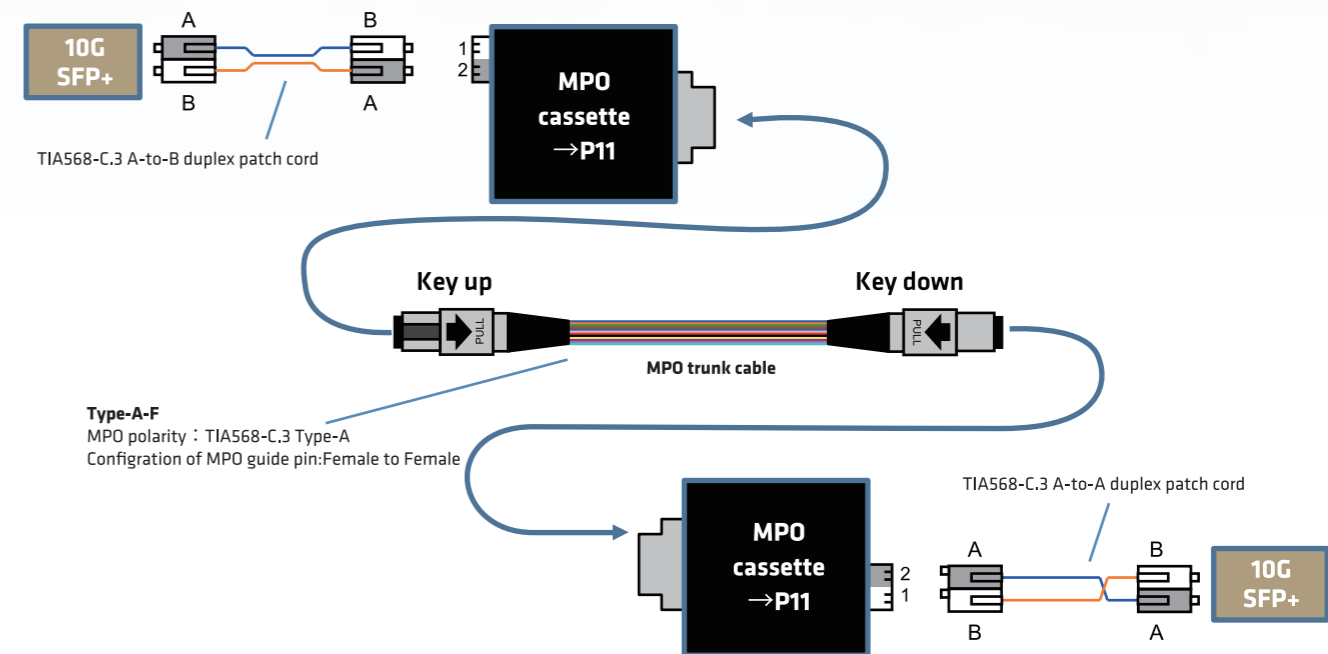


Bit Rate	10Gb/s (1lane x 10.3125Gbps)	40Gb/s (4lane x 10.3125Gbps)
Part Number	SPPD010G1STYKHM0 : 1m SPPD020H1STYKHM0 : 2m SPPD030H1STYKHM0 : 3m	QPPF010G1STYKHM0 : 1m QPPF020K1STYKHM0 : 2m QPPF030K1STYKHM0 : 3m
Form Factor	SFP+	QSFP+
Cable length	1m to 3m	1m to 3m
Operating Case temperature	0 to 70 degC	0 to 70 degC
Supply Voltage	3.3V	3.3V

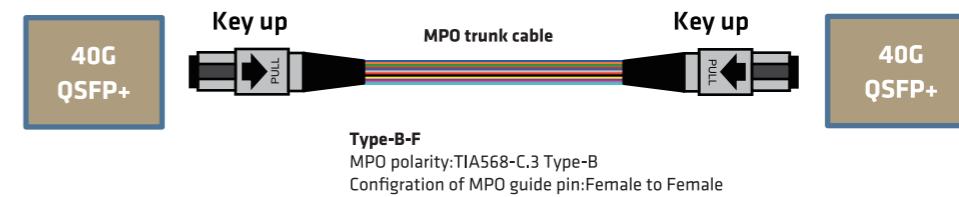
Note: There are 5,7 m models with Twinax cable.

MPO connector - Polarity and connectivity

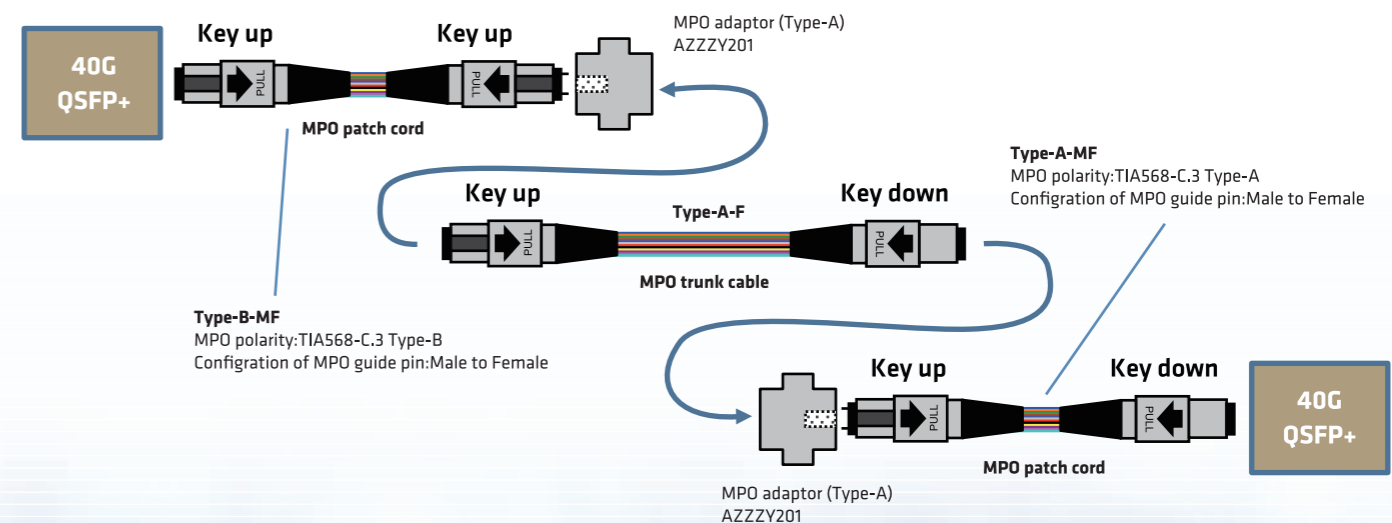
10GBASE-SR (with MPO cassette)



40GBASE-SR4 (without MPO patch cord)



40GBASE-SR4 (with MPO patch cord)



Field installable connector solution

Lynx2 CustomFit™ Splice-on Connector

Field installable connector assembled by Fusion Splicer

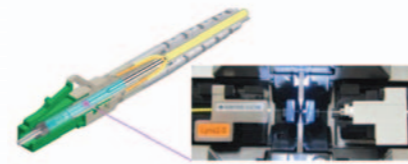
- Easy termination with "factory made" quality
- No polishing, no adhesive
- Assembled by standard Sumitomo Fusion Splicer

Enable to decide cable length exactly at site by field termination

- Remove cable congestion in and around rack
- Make easy install, move, add and change of connection

Just use standard bulk cable and connector kit

- Short product lead time by no custom-made cables



Conventional cabling solution

Field installable connector solution

Wide product line-up

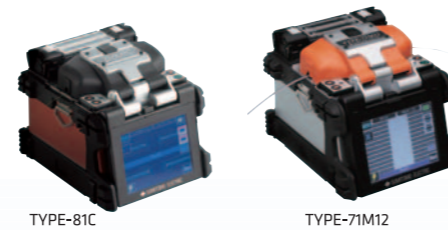
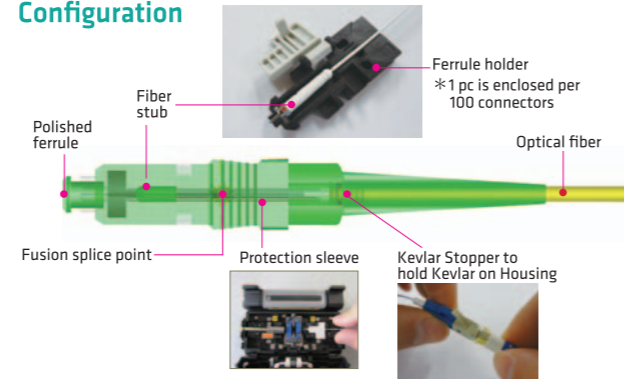


Applicable Fusion splicer to Lynx2-CustomFit™

	TYPE-81C	TYPE-71M12	TYPE-81M12	TYPE-201e-VS/M4
Single-fiber connector	●	●	●	●
MPO connector	—	●	—	—

	TYPE-39	TYPE-66M	TYPE-25e
Single-fiber connector	●	●	●
MPO connector	—	—	—

Configuration



Assembly process



Field installable connector (Fusion splice type)

Specification for Lynx2-CustomFit™ Splice-on Connector

	LYNX2-SC	LYNX2-LC	LYNX2-FCM	LYNX2-MPO
Standard	IEC61754-4	IEC61754-20	IEC61754-13	IEC61754-7
Insertion Loss	SMF : 0.2dB(average) MMF : 0.1dB(average)	0.3dB(Max) 0.25dB(Max)		SMF,MMF/Low loss: Max 0.4dB SMF/Std. loss: Max 0.75dB
Return Loss	SMF: Min 60dB (APC) MMF: Min 30dB (PC)	Min 55dB (UPC)		

Single-fiber connector

Ordering code: LYNX2-P1,P2-P3-P4
P1: Connector, P2: Polishing, P3: Fiber, P4: Cord diameter
Example: LYNX2-SC,UPC-SM-250/900, LYNX2-SC,APC-SM-2

P1: Connector		P2: Polishing		P3: Fiber		P4: Cord [mm]	
P1	Connector	P2	P3	Connector color	P4	Diameter [mm]	
SC LC FCM	SC connector LC connector FC connector	APC	SM	Green	250/900	0.25mm/0.9mm 2mm 3mm	
		UPC	SM	Blue			
		PC	M5(OM2)	Black	2		
			M5(OM3)	Aqua	3		
		M6	Beige				

12MPO connector

Ordering code: LYNX2-12MPO(P1)-P2-P3
P1: Guide pin, P2: Fiber, P3: Cord type
Example: LYNX2-12MPO(M)-M5(OM3)LL-RBN

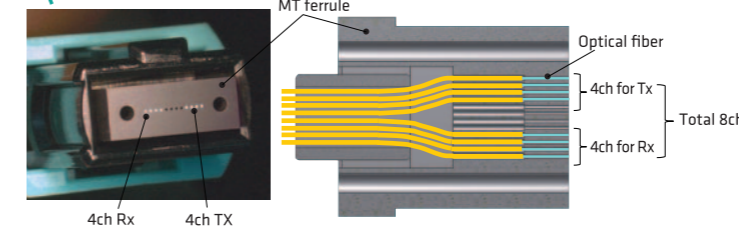
P1: Guide pin		P2: Fiber			P3: Cord type	
P1	Guide pin	P2	Fiber	Connector color	P3	Cord type
M F	M: Male (with pin) F: Female (w/o pin)	SMLL	SM Low loss	Yellow	RBN RND	RBN: 12f bare ribbon RND: 12f round cord (Φ3mm)
		SM	SM Std loss	Green		
		M5(OM2) LL	M5(OM2) Low loss	Black	RBC	RBC: 12f ribbon cord (Φ3mm)
		M5(OM3) LL	M5(OM3) Low loss	Aqua		
		M6LL	M6 Low loss	Beige		

8MPO / Q8MPO connector - For 4th Level™-8Core 8MPO solution NEW

Ordering code: LYNX2-8MPO(P1)-P2-P3 / LYNX2-Q8MPO(P1)-P2-P3
P1: Guide pin, P2: Fiber, P3: Cord type
Example: LYNX2-Q8MPO(M)-M5(OM4)-RND

P1: Guide pin		P2: Fiber			P3: Cord type	
P1	Guide pin	P2	Fiber	Connector color	P3	cord type
M F	M: Male (with pin) F: Female (w/o pin)	M5(OM4)LL	M5(OM4) Low loss	aqua	RBN RND	RBN: 8f bare ribbon RND: 8f round cord (Φ3mm)

Q8MPO connector

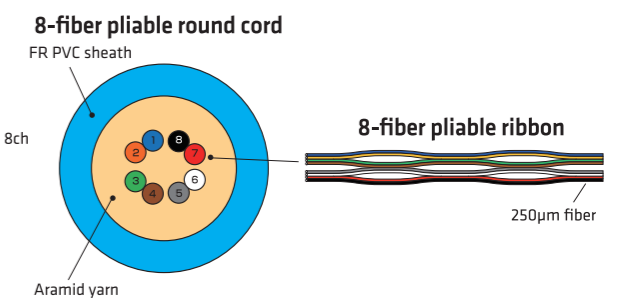


Lynx2-Q8MPO converts 8-fiber ribbon into QSFP+ channel assignment. Realize direct connection of 8-fiber ribbon to QSFP+.

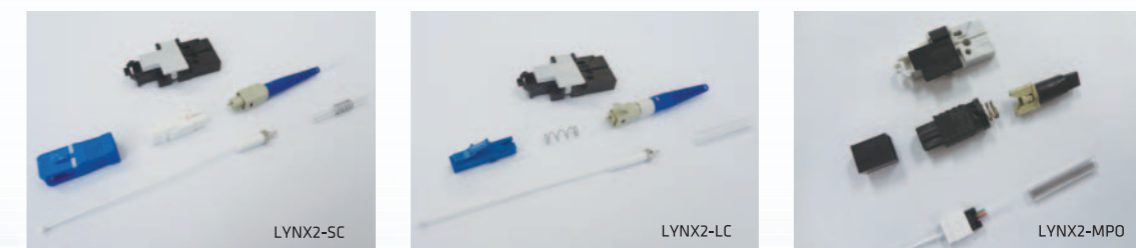
8Core → For more details in Page 17

Round cord with 8-fiber pliable ribbon NEW

- Enable to assemble Lynx2-MPO without ribbonization process



Connector kit



Field installable connector (Fusion splice type)

Assembly tool for Lynx2-Customfit™ Splice-on Connector

Tool name		Fiber cleaver [FC-7R-M] / [FC-6 Series]	Jacket remover [JR-M03]	Hot Jacket remover [JR-6]	LYNX sheath splitter [LYNX2-CORDTOOL-1.6-2.4]	LYNX sheath splitter [LYNX2-CORDTOOL-2.0-3.0]	Kevlar snips [N-57]
Tool							
Single-fiber connector	For cord	●	●	—	● for 1.6mm	● for 2mm/3mm	●
	For fiber	●	●	●	—	—	—
	For stub	—	—	—	—	—	—
MPO connector	For cord	●	—	●	—	● for round/ ribbon cord	●
	For bare ribbon	●	—	●	—	—	—

Tool name		Fiber holder				
		Cord / 0.9mm fiber [LYNX2-UML-S]	0.9mm fiber [FHS-09]	0.25mm fiber [FHS-025]	Stub holder [LYNX2-UML-C]	12f bare ribbon [FHM-12]
Tool						
Single-fiber connector	For cord	●	—	—	—	—
	For fiber	● for 0.9mm	● for 0.9mm	● for 0.25mm	—	—
	For stub	—	—	—	● (Optional)	—
MPO connector	For cord	—	—	—	—	●
	For bare ribbon	—	—	—	—	●

<Fiber holder recommendation> For Lynx2 single-fiber types

Fiber	Fiber holder	
	Left	Right
0.25mm fiber	FHS-025	LYNX2-UML-C / Plastic holder attached in Lynx2 connector kit
0.9mm fiber	FHS-09 / LYNX2-UML-S	
Cord	LYNX2-UML-S	

Assembly procedure Lynx2-PLUS (Cord type)

1

Slide Rear Parts and remove the Spring Holder.

2

Open Cord Tool and set the cord on the proper groove. Rotate the cord, then remove the outer sheath

3

Set the cord on the proper groove. Mark on the 900um fiber.

4

Open Cord Tool and set the cord. Grip Cord Tool and pull the cord to separate the outer sheath into two pieces.

5

Slide Protection Sleeve onto the cord. Cut the Kevlar at 2mm away from the protection sleeve edge.

6

Remove the fiber coating from the marking point. (JR-M03) Clean the fiber.

7

Set the fiber on the holder.
⚠ Do not touch bare fiber.

8

Cleave the fiber at 10mm.

Field installable connector (Fusion splice type)

9

Set Fiber Holder on the splicer (Left side).
⚠ Place fiber on V-groove gently

10

Pick up the Stub and set the Stub on the Plastic Holder (Stub Holder).
⚠ Do not touch bare fiber.

11

Set the Stub Holder on the splicer (Right side).
⚠ Place fiber on V-groove gently

12

Fusion splice.
Close gently
Splice completed

13

Open the Fiber Holder and the Stub Holder. Hold the assembly lightly to prevent bending

14

Slide Protection Sleeve until it covers the projection of the flange.
⚠ No twisting

15

Pull out sheath and Kevlar from the Sleeve.
Pull out the sheath and Kevlar from Protection Sleeve. Slide the spring onto separated sheath.

16

Set Protection Sleeve into the heater. Heat the Sleeve.
⚠ No twisting

17

Disassemble Boot / Kevlar Stopper and Rear Stopper. Rotate counter-clockwise.

18

Insert the Stub to Front Housing with correct key alignment. Assemble Front Housing and Rear Stopper.
APC: Dot to Lever side
PC/UPC: Flat surface to Lever side

19

Pull out outer Sheath and Kevlar from Rear Stopper.

20

Divide the Kevlar to two bunch. Slide Boot and Kevlar Stopper.

21

Secure Kevlar by Kevlar Stopper.
⚠ Not rotate Rear Stopper
Rotate Kevlar Stopper clockwise.

22

Cut the tether.

23

Complete.
SC: Assemble Outer Housing
LC
SC
FC

Jacket remover

Handy series Hot jacket remover JR-6

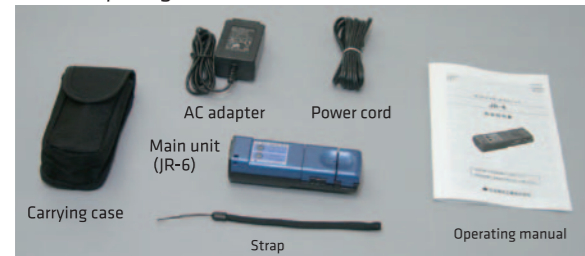
Lightweight, compact and easy to use

- The new design of grip and the downsized main body make the JR-6 ergonomic and comfortable to use. The coating removing force is less required. Downsized battery and reinforced plastic housing have enabled a 10% weight reduction from the previous model.
- Rugged design
- Built-in battery charger
- Easy maintenance and field replaceable blade
- A shock-resistant and drip-proof IPX1*

* IPX1 is a drip-proof standard code specified in JIS C 0920 and indicates that water drops falling vertically have no detrimental effects on IPX1-rated items.



Standard package



Jacket remover JR-M03

- No fiber nick design
- Removes 2-3mm jacketing insulation, 250µm & 900µm fiber coatings
- Comfort grip handle
- Optimal shape for visibility during the jacket removing process
- Lockable when not in use



Note: Specifications, standard package, etc. are subject to change without prior notice.

Items		JR-6
Applicable fiber	Material	Silica glass
	Fiber count	Single fiber: Fiber coating φ0.25 to φ0.4 mm
	Coating thickness	2 to 12-fiber ribbon: 0.3 to 0.4 mm in coating thickness (Used with fiber holders)
	Cladding diameter	125µm
Coating removal length		Max. 30 mm
Coating material		UV cured resin
Power supply		Battery operation (with BU-6): 7.4 V in nominal voltage and 1620 mAh in nominal capacity DC operation (power supplied from fusion splicer): 9 to 15 V DC ¹⁾ AC operation (with ADC-1220S): 100 to 240 V AC, 50/60 Hz
Operating duration		Approx. 10 h ²⁾
Number of removal cycles per fully-charged battery		Approx. 200 ³⁾
Battery charging time		Approx. 2 h (JR-6 cannot be used while the battery is being charged.)
Function		Temperature settings: 4 levels Power saving function: normal mode/power saving mode One of four LEDs shows battery level upon power up
Environmental conditions	Operation	Temperature: 0°C to +40°C Humidity: 0% to 95%RH (non-condensing)
	Storage	Temperature: -40°C to +60°C Humidity: 0% to 95%RH (non-condensing) This is not applicable to batteries.
Size		45 (W) × 138 (D) × 38 (H) mm
Weight		Approx. 235 g (including battery)

- *1. The battery-powered TYPE-25e fusion splicer does not have a DC power supply function. An optional DC cord is required for DC operation.
*2. In power saving mode and with factory default temperature settings
*3. The figure is the result of using a fully-charged brand new battery and repeating coating removal every three minutes at a room temperature of approximately 25°C.

Standard package * The package below is an example.

Part name	Part no.	Qty.	Description
Main unit	JR-6	1pc	Including one BU-6 battery
AC adapter	ADC-1220S	1pc	Used for AC power operation and battery charging
Power cord	—	1pc	For AC adapter
Strap	—	1pc	
Operating manual	OME0926019	1pc	
Carrying case	—	1pc	

Options

Part name	Part no.	Qty.	Description
Spare battery	BU-6	1pc	
AC adapter	ADC-1220S	1pc	
Spare blades	JR-6BL	Pair of upper and lower blades	
Single-fiber adapter	SFA-6	1pc	For removing a single-fiber coating
DC power cord	PC-B(C)	1pc	For power supply from fusion splicer

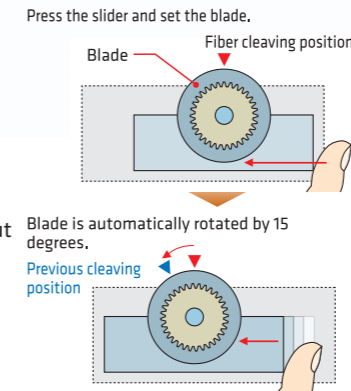
Items	JR-M03
Weight	Approx. 100 g
Applicable coating diameter	250µm to 3mm
Applicable cladding diameter	125µm

Fiber cleaver

Handy series Handheld optical fiber cleaver FC-7R series

The industry's first optical fiber cleaver with automatic blade rotation to ensure high precision cleaves.

- Lightweight and compact
- Single-handed operation with minimal steps
- The FC-7R can make 60,000 cleaves. Manual blade rotation and blade height adjustment are not necessary.
- Advanced automatic fiber offcut collection
- Does not use spacers required for mechanical splicing. (FC-7R-M)



Supplied shock-resistant semi-hard case

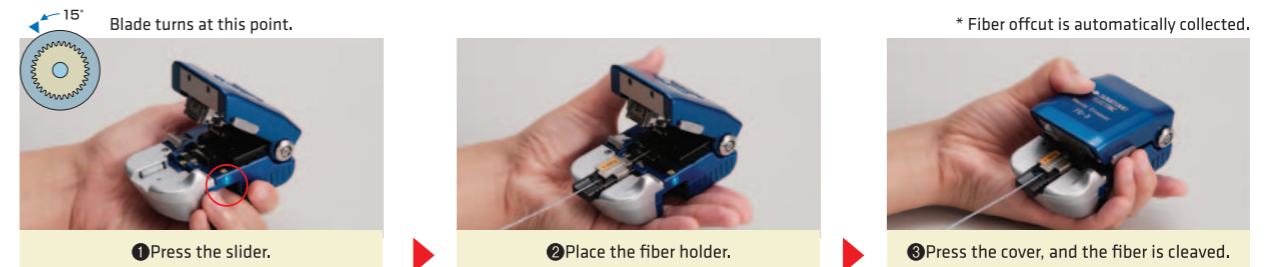


Springs inside the cleaver do not allow the fiber holder to fall

Options/Consumables

Part name	Part no.	Description
Single-fiber adapter	AP-FC7	Standard accessory to FC-7R-S
Fiber offcut collector	TR-FC7	Two pieces come as standard with FC-7R series.
Spare blade	FCP-20BL(7R)	Dedicated blade for FC-7R/6R series

FC-7R-F/M operating procedure



Optical fiber cleaver FC-6 series

Newly launched FC-6R series with automatic blade rotation

- The FC-6R series can make 60,000 cleaves. Manual blade rotation and blade height adjustment are not necessary.
- Fiber offcuts are automatically stored in the large capacity offcut collector.
- User selectable blade rotation.



FC-6RS-C

* Automatic/manual blade rotation mechanism (patent pending)

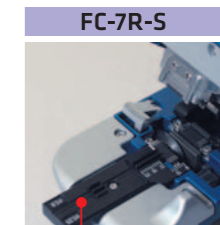
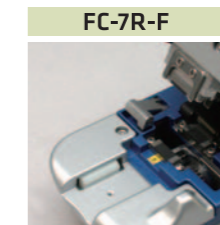
Note: Specifications, standard package, etc. are subject to change without prior notice.



1C-8C

US Patent #7,305,169 #8,443,705

Items	FC-7R-F	FC-7R-S
Applicable fiber	Single fiber and up to 8-fiber ribbon	Single fiber (for fiber coating φ0.25 to 0.9 mm)
Fiber count		
Cladding diameter		125µm
Cleave length	10mm	6~20mm (φ0.25mm) 10~20mm (φ0.9mm) * Built-in scale for measurement of cleave length
Size	98(W) × 58(D) × 47(H) mm	
Weight	Approx. 300 g	
Description	For use in fusion splicing and field installable connector	Single fiber cleaving



Single fiber adapter pre-attached

1C-12C

Items	FC-6RS-C	FC-6S-C
Applicable fiber	Single fiber (φ0.25 to φ0.9 mm)	
Fiber count		
Cladding diameter	125µm	
Automatic blade rotation	Provided	—
Cleave length	5~20mm (φ0.25 mm) / 10~20mm (φ0.9 mm)	
Size	100(W) × 81(D) × 63(H) mm	
Weight	Approx. 420 g	

Items	FC-6RM-C	FC-6M-C
Applicable fiber	Single fiber (φ0.25 to 0.9 mm) and up to 12-fiber ribbon*	
Fiber count		
Cladding diameter	125µm	
Automatic/blade rotation	Provided	—
Cleave length	10mm	
Size	100(W) × 81(D) × 63(H) mm	
Weight	Approx. 420 g	
Options	Single fiber adapter: AP-FC6M	

* Fiber holders suitable for the fiber count in use (single fiber and up to 12-fiber ribbon) are required. (→ p.23)

DCIM (Data center infrastructure management)

iDC Visual Manager : Integrated Connectivity & Asset Management System for Data Center

All kind of documentations and drawings (floor plan, rack implementation, connectivity, equipment, assets, trouble) are compiled into database and enable the data center operation management in a great accurate and effective manner.

Floor Layout Management

- Equipment implementation in the rack and cable routing can be managed in the ground plan drawing easily.
- Accurate dimension measurement and indication with the AutoCAD drawings.

Rack Implementation Management

- Rack implementation drawing can be created easily just by selecting equipment template by drag & drop operation
- Automatic calculation of open space in rack (open unit and maximum consecutive open units), electric consumption and equipment weight.
- Rack implementation drawing can be created automatically by importing equipment list in the MS Excel format.

Network, Cable Management

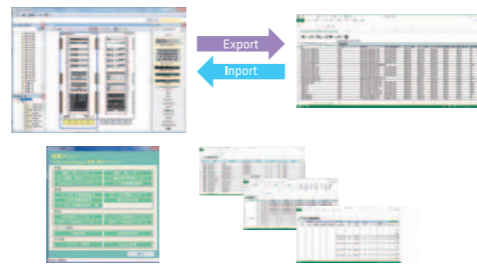
- Cables are illuminated in the screen that is convenient to route the cable.
- Port connections between Network equipment, servers, wiring panels, breaker outlet box can be easily done.

Documentation of Equipment

- All equipment can be registered and documented in any format. Maximum managerial fields are 250.

Alliance with Environment and Network Monitoring Systems

- With allied monitoring system, location and other information for alerted equipment (rack, panel, breaker, etc) will be provided to the system administrator.



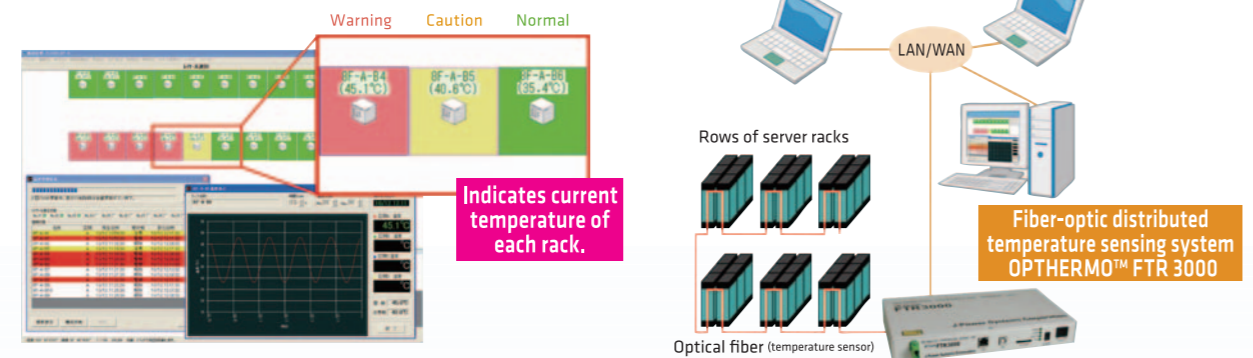
OPHTHERMO™ FTR 3000 Fiber-optic distributed temperature sensing system

- Monitors temperatures with only one line of optical fiber (GI50/125) up to a length of 2 km.
- Temperature sensing accuracy: ±1°C (over a length of 2 km, in 60 s measuring time intervals)
- Gives warnings and alarms.
- No performance degradation by EMI
- Long-life, maintenance-free optical fiber
- Small and light design: 300 (W) x 160 (D) x 37 (H) mm, approx. 3 kg
- Multi-Route monitoring can be set up with multi-unit connection or the combination with optical switch.



* OPHTERMO is a registered trade name of J-Power Systems Corporation.

Sample image for display of temperature sensing system



Optical fiber line-up

Single-mode optical fibers

	SM SM	PureAccess®-PB PABP	PureAccess®-A2 PAA2
Product name	SM	SM(PABP)	SM(PA-A2)
Standards compliance	ITU-T G.652.B OS1 #2	ITU-T G.652.D OS1, OS2 #2	ITU-T G.652.D OS1, OS2 #2
Mode field Diameter	9.2±0.5µm (λ=1310nm)	8.6±0.4µm (λ=1310nm)	8.6±0.4µm (λ=1310nm)
Cable cut-off wavelength	Max. 1260 nm	Max. 1260 nm	Max. 1260 nm
Attenuation	Max. 0.35 dB/ (λ=1310nm)	Max. 0.35 dB/ (λ=1310nm) Max. 0.33 dB/ (λ=1383nm) Max. 0.21 dB/ (λ=1550nm)	Max. 0.35 dB/ (λ=1310nm) Max. 0.33 dB/ (λ=1383nm) Max. 0.21 dB/ (λ=1550nm)
Zero dispersion wavelength	1300-1324nm	1300-1324nm	1300-1324nm
Minimum #1 bending radius	30mm	10mm	7.5mm
		Bending property improved	Same characteristic as SM(PA), and more improved bending property

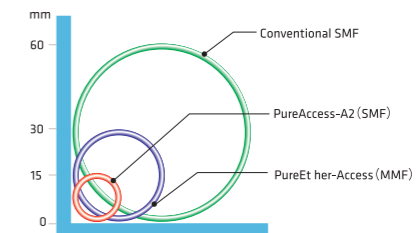
※1 Value in fiber ※2 Classified fiber in ISO/IEC 11801

Multi-mode optical fibers

	PureEther®-Access1G 1G	PureEther®-Access10G 10G	PureEther®-Access10G+ 10G+
Product name	GI(PE-A1G)	GI(PE-A10G)	GI(PE-A10G+)
Standards compliance	IEC60793-2-10 A 1a.1 type OM2 #2-compliant	IEC60793-2-10 A 1a.2 type OM3 #2-compliant	Compatible with upper grade of IEC60793-2-10 A 1a.2 type OM4 #2-compliant
Attenuation	3.0 dB/km max. (λ=850nm) 1.0 dB/km max. (λ=1300nm)	3.0 dB/km max. (λ=850nm) 1.0 dB/km max. (λ=1300nm)	3.0 dB/km max. (λ=850nm) 1.0 dB/km max. (λ=1300nm)
Transmission band	500 MHz·km min. (λ=850nm) 500 MHz·km min. (λ=1300nm)	1500 MHz·km min. Effective band 2000 MHz·km min. (λ=850nm) 500 MHz·km min. (λ=1300nm)	3500 MHz·km min. Effective band 4700 MHz·km min. (λ=850nm) 500 MHz·km min. (λ=1300nm)
Minimum #1 bending radius	15mm	15mm	15mm
		Can transmit signals to a maximum distance of 300 m at a rate of 10 gigabits	Can transmit signals to a maximum distance of 550 m at a rate of 10 gigabits

Bend insensitive optical fiber Access series

Accomplish from one half to one quarter minimum bending radius compare to conventional SM fiber.
Can realize smarter wiring and compact fiber placing



Can connect with conventional optical fiber at low insertion loss

Fiber combination	At fusion splicing	At optical connector
Pure Access-PB vs. conventional SM fiber	Ave. 0.03dB Max. 0.06dB	Ave. 0.13dB* Max. 0.30dB*

* vs. our optical connector with conventional SM fiber

Ethernet standards and transmission distance using optical fiber

Stand and name	Transmission rate	Wavelength	Form connector	Optical connector	MM:OM2	MM:OM3	MM:OM4	SM:OS1	SM:OS1,OS2	
					1G	10G	10G+	SM	PABP PAA2	
100 gigabit Ethernet	IEEE802.3bm	100GBASE-SR4	100Gbps	850nm	-	-	-	-	-	
		100GBASE-SR10	100Gbps	850nm	-	100m	150m	-	-	
		100GBASE-LR4	100Gbps	LAN-WDM	CFP/CFP2/CFP4	LC	-	-	-	10,000m
40 gigabit Ethernet	IEEE802.3ba	100GBASE-ER4	100Gbps	LAN-WDM	CFP	LC	-	-	40,000m	
		40GBASE-SR4	40Gbps	850nm	CFP/QSFP+	MPO	-	100m	150m	-
		40GBASE-LR4	40Gbps	CWDM	CFP/QSFP+	LC	-	-	-	10,000m
10 gigabit Ethernet	IEEE802.3bm	40GBASE-ER4	40Gbps	LAN-WDM	CFP	LC	-	-	-	
		40GBASE-FR	40Gbps	1550nm	CFP	LC	-	-	-	2,000m
		10GBASE-SR	10Gbps	850nm	SFP+	LC	82m	300m	550m	-
gigabit Ethernet	IEEE802.3ae	10GBASE-LR	10Gbps	1310nm	SFP+	LC	-	-	10,000m	
		10GBASE-ER	10Gbps	1550nm	SFP+	LC	-	-	-	40,000m
		1000BASE-SX	1Gbps	850nm	SFP	LC	550m	550m	550m	-
gigabit Ethernet	IEEE802.3z	-	1Gbps	850nm	SFP	LC	-	1000m*	-	
		1000BASE-LX	1Gbps	1300nm	SFP	LC	550m	550m	550m	-
		1000BASE-LX	1Gbps	1310nm	SFP	LC	-	-	-	5,000m

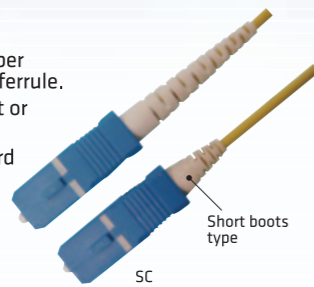
*Our experimental data. It might be different value in case of different network apparatus constructions

Single-fiber optical connector

SC

Features

- One of the most popular single fiber connector with 2.5mm diameter ferrule.
- Push-on design is easy to connect or disconnect.
- Can be attached to any optical cord or cable.



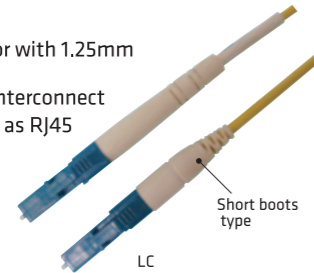
Fiber type	Single mode			Multi mode
Fiber name	SM, SM(PAPB), SM(PA-A2)			GI(PE-A) Series
Type of polishing	SPC	UPC	APC	PC
Connecting loss*	< 0.5dB	< 0.5dB	< 0.5dB	< 0.3dB
Return loss	> 40dB	> 55dB	> 60dB	> 25dB
Standard	IEC61754-4			

※ Against master plug
 ※ For SMF, low loss type (Insertion loss is 0.3dB or less) available.
 ※ For MMF, SPC polishing (return loss is 40dB or more) available.

LC

Features

- Small Form Factor (SFF) connector with 1.25mm diameter ferrule
- Suitable for high density optical interconnect
- Simple push-on connection same as RJ45
- Can be attached to any optical cord or cable.



Fiber type	Single mode			Multi mode
Fiber name	SM, SM(PAPB), SM(PA-A2)			GI(PE-A) Series
Type of polishing	SPC	UPC	APC	PC
Connecting loss*	< 0.5dB	< 0.5dB	< 0.5dB	< 0.3dB
Return loss	> 40dB	> 55dB	> 60dB	> 25dB
Standard	IEC61754-20			

※ Against master plug
 ※ For SMF, low loss type (Insertion loss is 0.3dB or less) available.
 ※ For MMF, SPC polishing (return loss is 40dB or more) available.

Duplex optical connector

- Two single fiber connectors are coupled. One push-on/off action realize two fiber connection/dis-connection.

SCF

Features

- Duplex SC connector.
- Suitable for LAN, connection pitch is 12.7mm.
- Compatible with SC connector.



Fiber type	Single mode			Multi mode
Fiber name	SM, SM(PAPB), SM(PA-A2)			GI(PE-A) Series
Type of polishing	SPC	UPC	APC	PC
Connecting loss*	< 0.5dB	< 0.5dB	< 0.5dB	< 0.3dB
Return loss	> 40dB	> 55dB	> 60dB	> 25dB
Standard	IEC61754-4			

※ Against master plug
 ※ For SMF, low loss type (Insertion loss is 0.3dB or less) available.
 ※ For MMF, SPC polishing (return loss is 40dB or more) available.

LCF

Features

- Duplex LC connector
- Connection pitch is 6.25mm.
- Compatible with LC connector.
- Suitable for high density termination.

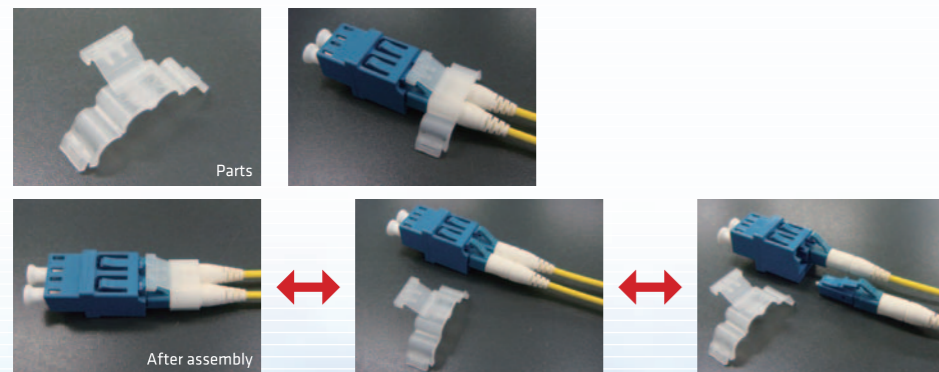


Fiber type	Single mode			Multi mode
Fiber name	SM, SM(PAPB), SM(PA-A2)			GI(PE-A) Series
Type of polishing	SPC	UPC	APC	PC
Connecting loss*	< 0.5dB	< 0.5dB	< 0.5dB	< 0.3dB
Return loss	> 40dB	> 55dB	> 60dB	> 25dB
Standard	IEC61754-20			

※ Against master plug
 ※ For SMF, low loss type (Insertion loss is 0.3dB or less) available.
 ※ For MMF, SPC polishing (return loss is 40dB or more) available.

DLCSB connector

- Two LC connectors can be bundled with the parts.
- Can use as LCF connector and can check each connector respectively.



Multi-fiber optical connector

8MPO,12MPO

Features

- Easy to attach/detach by a push-on action
- Enables high-density connection by compact dimension with multi-fibers

Application

- 10GBASE-SR, 40GBASE-SR4 etc



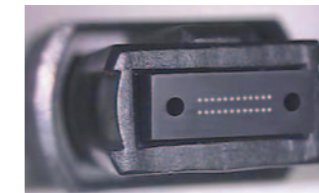
MPO

Connector	MPO (1 row type)				
Fiber Type	SM,SM(PAPB)		GI(PE-A) Series		
Fiber Count	8,12		12		
Polish	APC		Flat PC		
Insertion Loss (against master plug)	Std. Loss: ≤ 0.75dB Low Loss: ≤ 0.35dB				
Return Loss (against master plug)	≥ 55dB				
Housing Color	SM,Std Loss Green	SM,Low Loss Yellow	MM62.5 Beige	MM50 Black	MM50(10G) Aqua
Reliability	Telcordia GR-1435-CORE				
Interface	IEC 61754-7				

24MPO

Features

- 24-fiber connector with two 12-fiber ribbons arranged in parallel on a ferrule
- Most suitable for high-density fiber connection



MPO (2 row)

Connector	MPO (2 row type)				
Fiber Type	SM,SM(PAPB)		GI(PE-A) Series		
Fiber Count	24				
Polish	APC		Flat PC		
Insertion Loss (against master plug)	Std. Loss: ≤ 0.75dB Low Loss: N/A		Std. Loss: ≤ 0.75dB Low Loss: ≤ 0.35dB		
Return Loss (against master plug)	≥ 55dB				
Housing Color	SM,Std Loss Green	SM,Low Loss Yellow	MM62.5 Beige	MM50 Black	MM50(10G) Aqua
Reliability	Telcordia GR-1435-CORE				
Interface	IEC 61754-7				

Application

- 100GBASE-SR10 etc

Ferrule polishing

Connector characteristics differ according to the ferrule polishing method.

	Polishing shape	Polishing method	Connection	Features
Single fiber	Retangular spherical	PC		Ferrule endface is polished spherically so as to ensure fiber to fiber contact(PC connection). Gurantee return loss of 25dB(SM)..
		SPC		An evolution of PC polishing. Achieve a return loss of 40dB. (against master plug)
		UPC		Moreover evolution of SPC polishing. Achieve a return loss of 55dB. (against master plug)
Multi-fiber	Angled spherical (8 degree)	APC		Ferrule endface is angle polished spherically and realized PC connection and low return loss of 60dB. (can NOT connect with rectangular spherical polishing:PC, SPC, UPC)
		PC(Code:R)		Retangular special polishing of the endface. Realize PC connection. Index matching material is Not necessary MPO connector for GI fiber is generally rectangular PC polishing.
Multi-fiber	Angle (8 degree)	PC(Code:A)		Angled special polishing of the endface. Realize PC connection and low retrun loss. Index matching material is Not necessary MPO connector for SM fiber is generally angled PC polishing.